



LMT150DNGFWD-NNA-1

LCD Module User Manual

Prepared by: LINLI Date: 2018-07-03	Checked by: Date:	Approved by: Date:
--	----------------------------------	-----------------------------------

Rev.	Descriptions	Release Date
0.1	Preliminary	2018-07-03

Table of Content

1. General Specification	3
2. Block Diagram.....	3
3. Terminal Function.....	4
3.1 K1 TFT Terminal.....	4
3.2 K2 Backlight Terminal.....	4
3.3 Touch Panel Terminal.....	4
4. Absolute Maximum Ratings	5
5. Electrical Characteristics	6
5.1 DC Characteristics	6
5.2 Driving For Backlight.....	6
5.3 Touch Panel Characteristics	6
5.4 Block Diagram.....	7
6. Display colors and input data information.....	8
6.1 Display colors and data signal.....	8
6.2 Data mapping.....	9
7. AC Characteristics.....	10
7.1 Timing Characteristics.....	10
7.2 Input signal timing chart	10
7.3 Pixel data alignment of display Image.....	11
7.4 Power supply voltage sequence.....	11
8. Optical Characteristics	12
9. LCD Module Design and Handling Precautions.....	13
10. CTP Mounting Instructions	14
11. RTP Mounting Instructions	15
Warranty	16

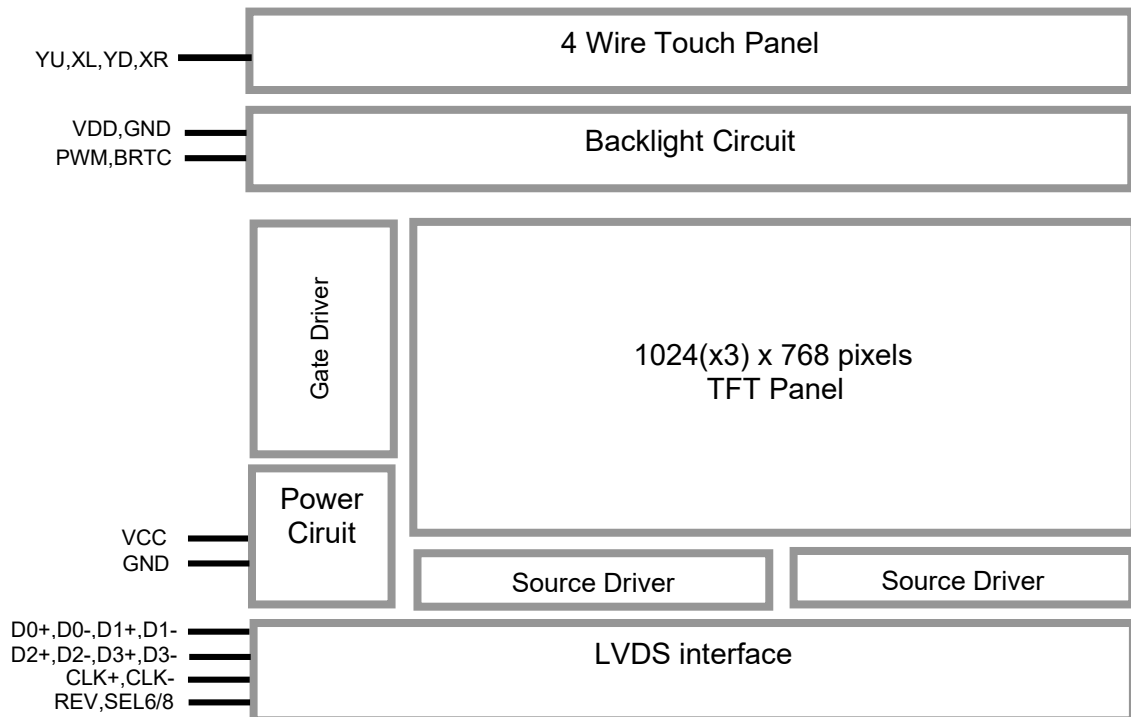
1. General Specification

Signal Interface :	24bit LVDS (VESA) or 18bit LVDS
Display Technology :	a-Si TFT active matrix
Display Mode :	Transmissive with Normally White
Screen Size :	15.0 inch
Outline Dimension :	326.5 x 253.5 x 14.5(mm) (see outline drawing for details)
Active Area :	304.128x228.096 (mm)
Number of dots :	1024x 3 (RGB) x 768
Pixel Pitch :	0.264x 0.264(mm)
Pixel Configuration :	R.G.B. Stripe
Backlight :	White LED
Viewing Direction :	6 o'clock(Gray scale Inversion)(*1) 12 o'clock(*2)
Touch Panel:	4 wire resistive
Operating Temperature :	-20 ~ +70°C
Storage Temperature :	-30 ~ +80°C

Note:

- *1. For saturated color display content (eg. pure-red, pure-green, pure-blue or pure-colors -combinations).
- *2. For “color scales” display content.
- *3. Color tone may slightly change by temperature and driving condition.

2. Block Diagram



3. Terminal Function

3.1 K1 TFT Terminal

Pin No.	Pin Name	IO	Descriptions	
			Input data signal: 24bit	Input data signal:18bit
1	VCC	Power	Power Supply	
2	VCC	Power		
3	GND	Power	Ground	
4	REV	Input	Selection of scan direction High: Reverse scan Low or Open: Normal scan	
5	D0-	Input	LVDS receiver negative signal channel 0	
6	D0+	Input	LVDS receiver positive signal channel 0	
7	GND	Power	Ground	
8	D1-	Input	LVDS receiver negative signal channel 1	
9	D1+	Input	LVDS receiver positive signal channel 1	
10	GND	Power	Ground	
11	D2-	Input	LVDS receiver negative signal channel 2	
12	D2+	Input	LVDS receiver positive signal channel 2	
13	GND	Power	Ground	
14	CLK-	Input	LVDS receiver negative signal clock	
15	CLK+	Input	LVDS receiver positive signal clock	
16	GND	Power	Ground	
17	D3-	Input	LVDS receiver negative signal channel 3	Ground
18	D3+	Input	LVDS receiver positive signal channel 3	
19	NC	--	Non connection	
20	SEL6/8	Input	Low	High or Open

Note: Terminal header 185083-20121 (P-TWO ELECTRIC TECHNOLOGY CO., LTD.) or equivalent

3.2 K2 Backlight Terminal

Pin No.	Pin Name	IO	Descriptions
1	NC	--	Non connection
2	PWM	Input	PWM Luminance control BLADJ= Hi,100% Drive BLADJ= Lo,0% Drive
3	BRTC	Input	Back light ON/OFF control:5V-On / 0V-Off
4	GND	Power	Ground
5	VDD	Power	Backlight Power Supply(12V)

Note: Terminal header MSB24038P5 (Produced by STM) or equivalent

3.3 Touch Panel Terminal

Pin No.	Pin Name	IO	Descriptions
1	XR	Passive	Right Side sense Terminal
2	YU	Passive	Up Side sense Terminal
3	XL	Passive	Left Side sense Terminal
4	YD	Passive	Down Side sense Terminal

4. Absolute Maximum Ratings

GND=0V

Items	Symbol	Min.	Max.	Unit	Condition
Power voltage	VCC	-0.5	5.0	V	
Input voltage	V _{IN}	-0.5	5.0	V	
Operating Temperature	T _{OP}	-20	70	°C	Note1
Storage Temperature	T _{ST}	-30	80	°C	
Relative Humidity(*2)	RH	--	≤90	%	Ta≤40°C
		--	≤85	%	40°C < Ta≤50°C
		--	≤55	%	50°C < Ta≤60°C
		--	≤36	%	60°C < Ta≤70°C
		--	≤24	%	70°C < Ta≤80°C
Absolute Humidity	AH	--	≤70	g/m ³	Ta>50°C

Note:

*1. The temperature of panel display surface area should be -20° C Min and 70° C Max.

*2: a).Ta means the ambient temperature.

b).It is necessary to limit the relative humidity to the specified temperature range.

c).Condensation on the module is not allowed.

d).Wet-bulb temperature should be39° C Max. (Ta> 40° C)

e).90%RH Max. (Ta≤ 40° C)

*3. Any Stresses exceeding the Absolute Maximum Ratings may cause substantial damage to the device.

Functional operation of this device at other conditions beyond those listed in the specification is not implied and prolonged exposure to extreme conditions may affect device reliability.

5. Electrical Characteristics

5.1 DC Characteristics

VCC=3.3V,GND=0V,Ta=25°C

Items	Symbol	MIN.	TYP.	MAX.	Unit	Note
Power supply voltage	VCC	3.0	3.3	3.6	V	
Power supply ripple	Vp-p			200	mA	Including spike noise
Power supply current	Icc	--	550	--	mA	*1
Permissible ripple voltage	VRP	--	--	100	mV	
Differential input voltage	Vid	250	--	450	mV	
Differential input threshold voltage for LVDS receiver	High	VTH	--	100	mV	VCM = 1.25V *2
	Low	VTL	-100	--	--	
Input voltage width for LVDS receiver	Vi	0	--	1.90	V	
Terminating resistor	RT	--	100	-	Ω	
Rush current	I _{rush}	--	-	1.5	A	*3
Input voltage for MSL signals	High	VFH	0.7VCC	--	VCC	V
	Low	VFL	0	---	0.3VCC	V

Note:

*1: Black mode, 65MHz, at VCC = 3.3V.

*2: Common mode voltage for LVDS receiver.

*3: Measurement Conditions.

5.2 Driving For Backlight

Items	Symbol	MIN.	TYP.	MAX.	Unit	Note
Power supply voltage	VDD	10.8	12.0	12.6	V	
Power supply current	IDD	--	705	--	mA	
Input voltage for BLADJ signal	High	VDFH1	2.0	--	5.0	V
	Low	VDFL1	0	--	0.4	V
Input voltage for BLEN signal	High	VDFH2	2.0	--	5.0	V
	Low	VDFL2	0	--	0.4	V
PWM frequency	fpwm	200	--	(20K)	Hz	BLADJ
PWM duty	--	5	--	100	%	BLADJ
Led life time	Hr	--	50000	--	Hour	*1

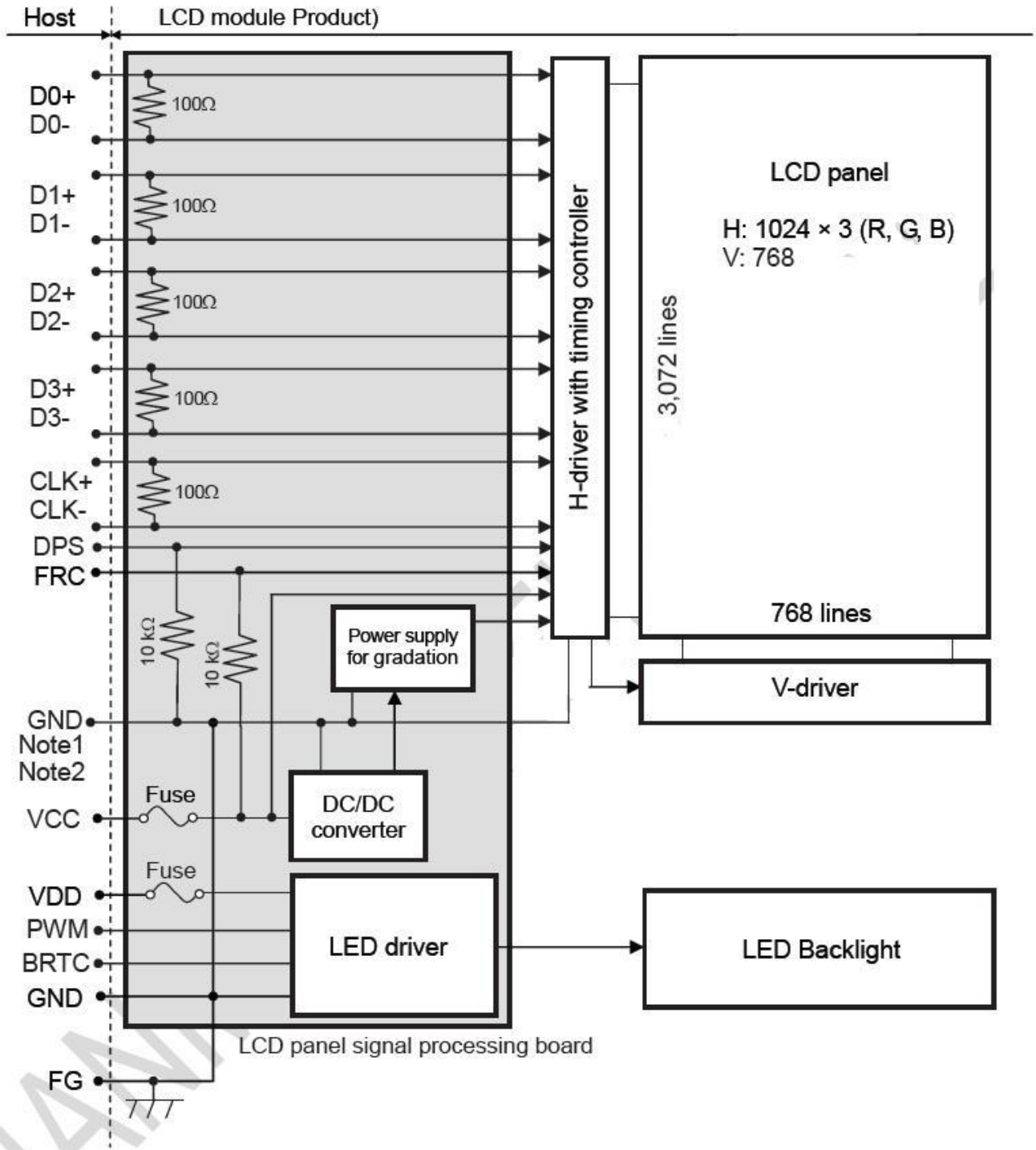
Note:

*1. Optical performance should be evaluated at Ta=25°C.

5.3 Touch Panel Characteristics

Items	MIN.	TYP.	MAX.	Unit	Note
Operating Voltage	--	--	10	V	
Terminal resistance	150	400	1100	Ω	X-terminal
	150	400	1100	Ω	Y-terminal
Operating pressure	20	--	150	g	
Response time	--	--	10	ms	
Life Time	--	1000,000	--		Click Times

5.4 Block Diagram



*1.Relations between GND (Signal ground and LED driver ground) and FG (Frame ground) in the LCD module are as follows

GND - FG	Connected
----------	-----------

*2. GND and FG must be connected to customer equipment's ground, and it is recommended that these grounds be connected together in customer equipment.

6. Display colors and input data information

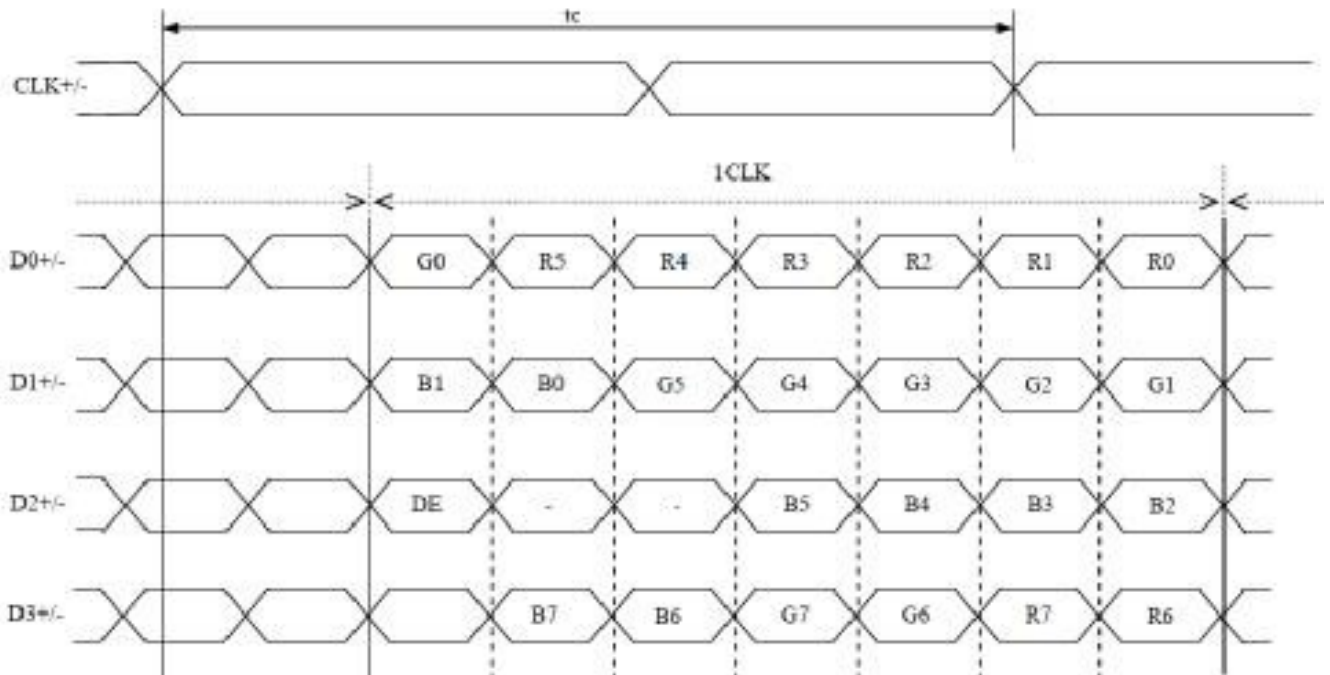
6.1 Display colors and data signal

This product can display in equivalent to 16,194,277 colors in 253 scales. Also the relation between display colors and input data signals is as the following table. And it can display in equivalent to 262,144 colors in 64 scales, without data signals R7, R6, G7, G6, B7, B6 in the following table.

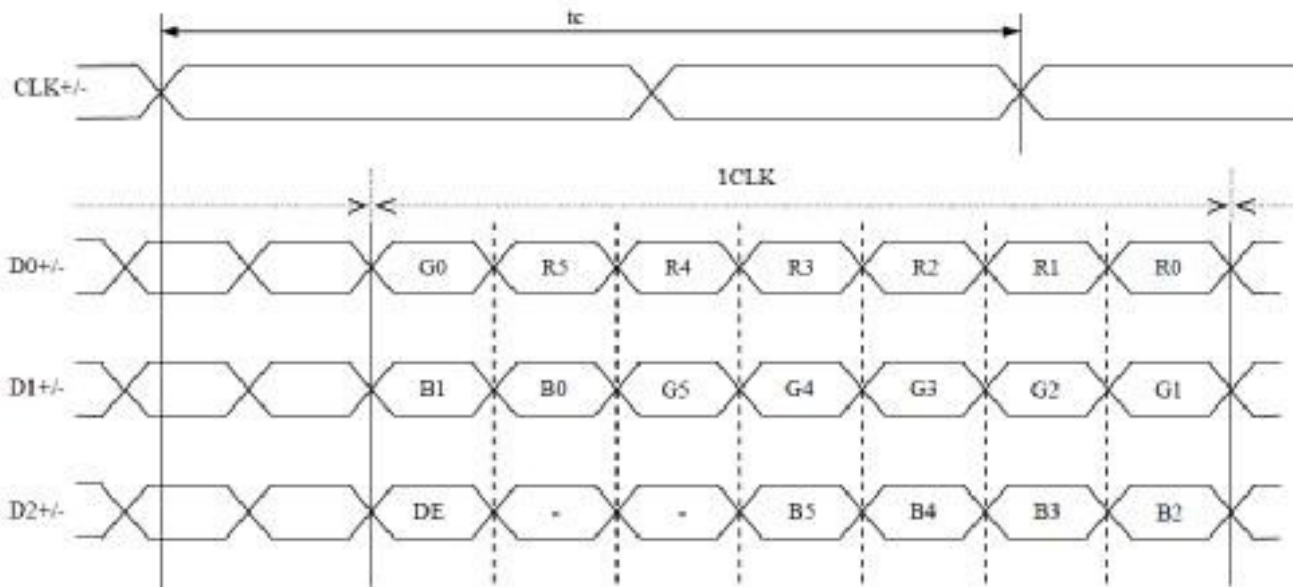
Display colors		Data signal (0:Low level · 1:High Level)																							
		R7	R6	R5	R4	R3	R2	R1	R0	G7	G6	G5	G4	G3	G2	G1	G0	B7	B6	B5	B4	B3	B2	B1	B0
Basic Color	Black	0	0	0	0	0	0	0	0	0	0	0	0	0	0	0	0	0	0	0	0	0	0	0	0
	Blue	0	0	0	0	0	0	0	0	0	0	0	0	0	0	0	0	1	1	1	1	1	1	1	1
	Red	1	1	1	1	1	1	1	1	0	0	0	0	0	0	0	0	0	0	0	0	0	0	0	0
	Magenta	1	1	1	1	1	1	1	1	0	0	0	0	0	0	0	0	1	1	1	1	1	1	1	1
	Green	0	0	0	0	0	0	0	0	1	1	1	1	1	1	1	1	0	0	0	0	0	0	0	0
	Cyan	0	0	0	0	0	0	0	0	1	1	1	1	1	1	1	1	1	1	1	1	1	1	1	1
	Yellow	1	1	1	1	1	1	1	1	1	1	1	1	1	1	1	1	0	0	0	0	0	0	0	0
	White	1	1	1	1	1	1	1	1	1	1	1	1	1	1	1	1	1	1	1	1	1	1	1	1
Red grayscale	Black	0	0	0	0	0	0	0	0	0	0	0	0	0	0	0	0	0	0	0	0	0	0	0	0
	Dark ↕	0	0	0	0	0	0	0	1	0	0	0	0	0	0	0	0	0	0	0	0	0	0	0	0
		0	0	0	0	0	0	1	0	0	0	0	0	0	0	0	0	0	0	0	0	0	0	0	0
	Bright Red	1	1	1	1	1	1	0	1	0	0	0	0	0	0	0	0	0	0	0	0	0	0	0	0
		1	1	1	1	1	1	1	0	0	0	0	0	0	0	0	0	0	0	0	0	0	0	0	0
		1	1	1	1	1	1	1	1	0	0	0	0	0	0	0	0	0	0	0	0	0	0	0	0
Green grayscale	Black	0	0	0	0	0	0	0	0	0	0	0	0	0	0	0	0	0	0	0	0	0	0	0	0
	Dark ↕	0	0	0	0	0	0	0	0	0	0	0	0	0	0	0	1	0	0	0	0	0	0	0	0
		0	0	0	0	0	0	0	0	0	0	0	0	0	0	1	0	0	0	0	0	0	0	0	0
	Bright Green	0	0	0	0	0	0	0	0	1	1	1	1	1	1	0	1	0	0	0	0	0	0	0	0
		0	0	0	0	0	0	0	0	1	1	1	1	1	1	1	0	0	0	0	0	0	0	0	0
		0	0	0	0	0	0	0	0	1	1	1	1	1	1	1	1	0	0	0	0	0	0	0	0
Blue grayscale	Black	0	0	0	0	0	0	0	0	0	0	0	0	0	0	0	0	0	0	0	0	0	0	0	0
	Dark ↕	0	0	0	0	0	0	0	0	0	0	0	0	0	0	0	0	0	0	0	0	0	0	0	1
		0	0	0	0	0	0	0	0	0	0	0	0	0	0	0	0	0	0	0	0	0	0	1	0
	Bright Blue	0	0	0	0	0	0	0	0	0	0	0	0	0	0	0	0	1	1	1	1	1	1	0	1
		0	0	0	0	0	0	0	0	0	0	0	0	0	0	0	0	1	1	1	1	1	1	1	0
		0	0	0	0	0	0	0	0	0	0	0	0	0	0	0	0	1	1	1	1	1	1	1	1

6.2 Data mapping

(1) LVDS Input data signal: 24bit(VESA mode)



(2) LVDS Input data signal: 18bit



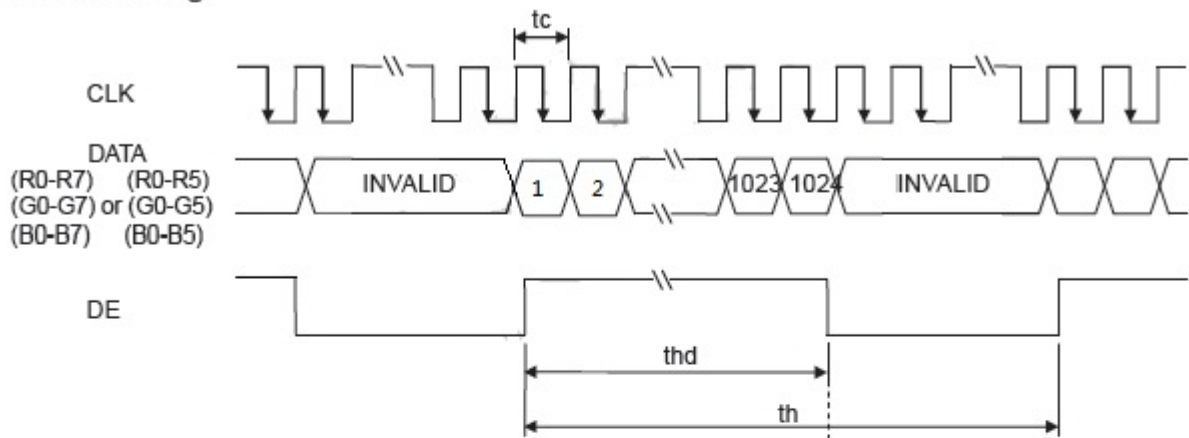
7. AC Characteristics

7.1 Timing Characteristics

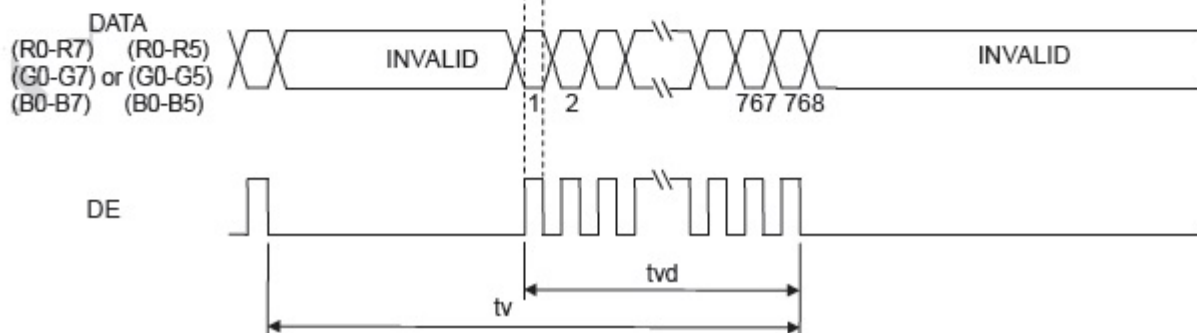
Parameter		Symbol	MIN.	TYP.	MAX.	Unit	Unit
Clock	Frequency	1/tc	52	56.88	71	MHz	17.58ns (typ)
		tc	19.23	17.58	14.08	Ns	
Horizontal signals	Cycle	th	1114	1200	1400	CLK	
	Display period	thd	1024				
Vertical signals	Cycle	tv	778	790	845	H	60.0Hz(typ)
	Display period	tvd	768				-

7.2 Input signal timing chart

Horizontal timing

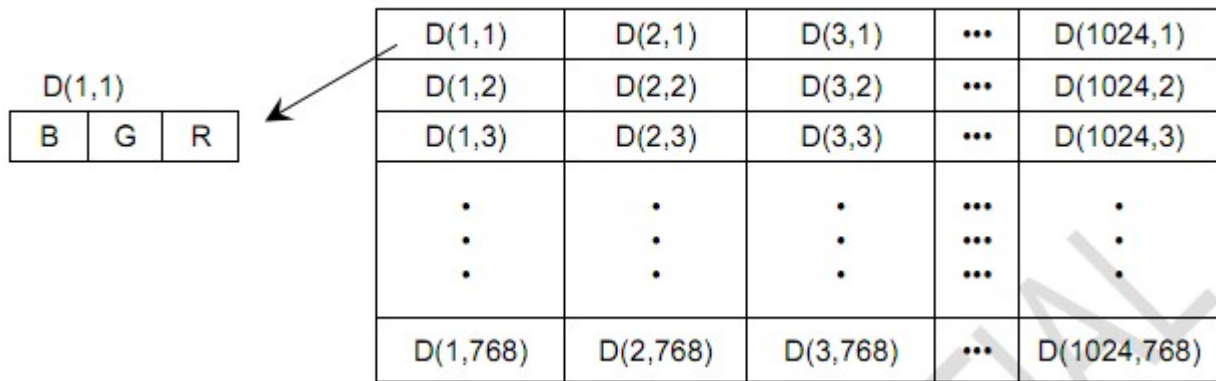


Vertical timing



7.3 Pixel data alignment of display Image

The following chart is the coordinates of per pixel

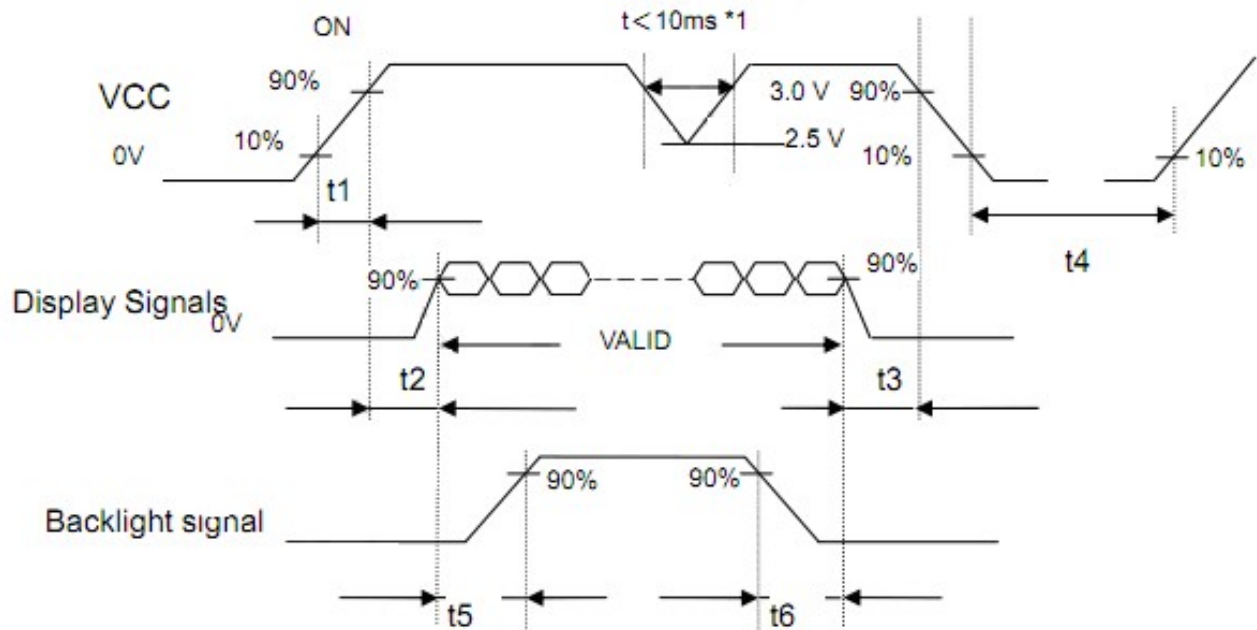


Note:

*1.Pixel arrangement is BGR strip when module’s PCB side placed upward. It is suggested that Module’s PCB side should place downward to compatible with RGB pixel arranging modules.

7.4 Power supply voltage sequence

6.4.1 The sequence of backlight and power



- Timing Specifications:
- t1 :0.5ms<t1 <10ms;
 - t2 :0.5 ms<t2 <50ms;
 - t3 :0ms<t3 <50ms;
 - t4 :t4 >1000ms;
 - t5 :t5 >200ms;
 - t6 :t6 >200ms;

8. Optical Characteristics

VDD=12V,VCC=3.3V,GND=0V,Ta=25°C

Item	Symbol	Condition	MIN.	TYP.	MAX.	UNIT	Note.
Viewing angle (CR≥10)	θ_L	9 o'clock	70	80	-	degree	*2
	θ_R	3 o'clock	70	80	-		
	θ_T	12 o'clock	70	80	-		
	θ_B	6 o'clock	70	80	-		
Response Time	T_{ON}	Normal $\theta=0^\circ$	-	8	12	msec	*3
	T_{OFF}		-	8	12	msec	
Contrast ratio	CR		600	800	-	-	*1
Color chromaticlty	W_X		0.263	0.313	0.363	-	
	W_Y		0.279	0.329	0.379	-	
Luminance	L		320	360	-	cd/m ²	*4
Luminance uniformity	Y_U		-	75	80	%	*4

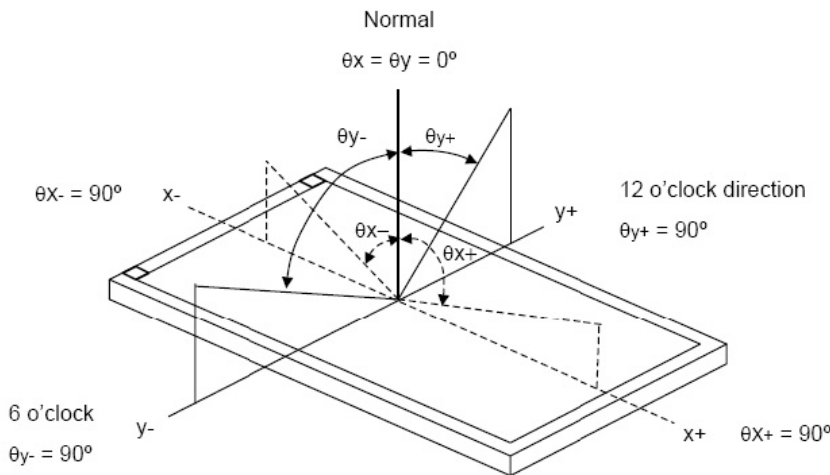
Note:

*1. Definition of Contrast Ratio

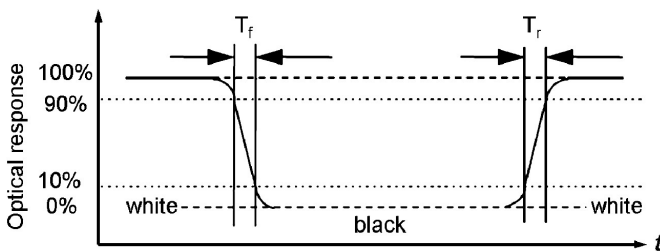
The contrast ratio could be calculate by the following expression:

Contrast Ratio (CR) = Luminanc with all pixels white / Luminance with all pixels black

*2 Definition of Viewing Angle



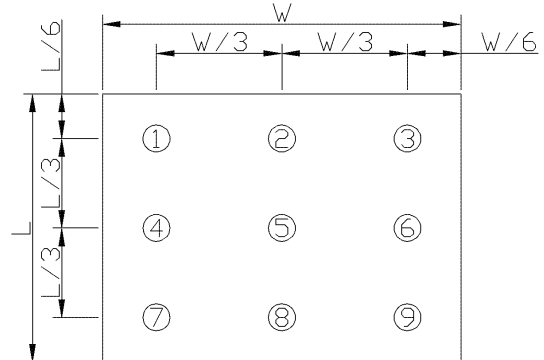
*3 Definition of response time



*4 Definition of Luminance Uniformity

Luminance uniformity (Lu)=

Min. Luminance form pt1~pt9 / Max Luminance form Pt1~pt9



9. LCD Module Design and Handling Precautions

- Please ensure V0, VCOM is adjustable, to enable LCD module get the best contrast ratio under different temperatures, view angles and positions.
- Normally display quality should be judged under the best contrast ratio within viewable area. Unexpected display pattern may come out under abnormal contrast ratio.
- Never operate the LCD module exceed the absolute maximum ratings.
- Never apply signal to the LCD module without power supply.
- Keep signal line as short as possible to reduce external noise interference.
- IC chip (e.g. TAB or COG) is sensitive to light. Strong light might cause malfunction. Light sealing structure casing is recommended.
- Make sure there is enough space (with cushion) between case and LCD panel, to prevent external force passed on to the panel; otherwise that may cause damage to the LCD and degrade its display result.
- Avoid showing a display pattern on screen for a long time (continuous ON segment).
- LCD module reliability may be reduced by temperature shock.
- When storing and operating LCD module, avoids exposure to direct sunlight, high humidity, high or low temperature. They may damage or degrade the LCD module.
- Never leave LCD module in extreme condition (max./min storage/operate temperature) for more than 48hr.
- Recommend LCD module storage conditions is 0 C~40 C <80%RH.
- LCD module should be stored in the room without acid, alkali and harmful gas.
- Avoid dropping & violent shocking during transportation, and no excessive pressure press, moisture and sunlight.
- LCD module can be easily damaged by static electricity. Please maintain an optimum anti-static working environment to protect the LCD module. (eg. ground the soldering irons properly)
- Be sure to ground the body when handling LCD module.
- Only hold LCD module by its sides. Never hold LCD module by applying force on the heat seal or TAB.
- When soldering, control the temperature and duration avoid damaging the backlight guide or diffuser which might degrade the display result such as uneven display.
- Never let LCD module contact with corrosive liquids, which might cause damage to the backlight guide or the electric circuit of LCD module.
- Only clean LCD with a soft dry cloth, Isopropyl Alcohol or Ethyl Alcohol. Other solvents (e.g. water) may damage the LCD.
- Never add force to components of LCD module. It may cause invisible damage or degrade the module's reliability.
- When mounting LCD module, please make sure it is free from twisting, warping and bending.
- Do not add excessive force on surface of LCD, which may cause the display color change abnormally.
- LCD panel is made with glass. Any mechanical shock (e.g.

9. 液晶显示模块设计和使用须知

- 请注意 V0, VCOM 的设置, 以确保液晶显示模块在不同的使用温度下以及在不同的视角和位置观察模块显示, 均能达到最佳对比度, 请务必将应用电路上设置为对比度可调。
- 请注意液晶显示模块的显示品质判定是指在正常对比度下以及视窗 (V. A) 范围内进行的, 非正常对比度下液晶可能会出现非预期的显示不良, 应注意区分。
- 请勿在最大额定值以外使用液晶显示模块。
- 请勿在没有接通电源的条件下, 给液晶显示模块输送信号。
- 请尽可能缩短信号线的连接, 以避免对液晶显示模块的信号干扰。
- 集成电路因 IC 芯片 (如 TAB 或 COG) 对紫外线极为敏感, 强光环境下可能会引起液晶显示模块功能失效, 故应采用不透光的外壳。
- 请在液晶显示模块与外壳之间保留足够的空间 (可使用衬垫), 以缓冲外力对液晶显示模块的损坏或因受力不均而产生的显示不均匀等异常现象。
- 避免液晶显示屏在某一画面下长时间点亮, 否则有出现残影的风险; 请通过软件每隔一段时间改变一次画面。
- 液晶显示模块的可靠性可能因温度冲击而降低。
- 请勿在阳光直射、高湿、高温或低温下储存和使用液晶显示模块, 这将造成液晶显示模块的损坏或失效。
- 请勿在极限环境 (最大/最小存储/工作温度) 下使用或放置液晶显示模块超过 48 小时以上。
- 液晶显示模块建议存储条件为: 0 C~40 C <80%RH。
- 请勿让液晶显示模块存储于带有酸性、碱性、有害气体环境之中。
- 在运输过程中, 请勿让液晶显示模块跌落与猛烈震动, 同时避免异常挤压, 高湿度, 与阳光照射。
- 液晶显示模块极易受静电损坏, 请务必保证液晶显示模块在防静电的工作环境中使用或保存。(如: 烙铁正确接地, 等)
- 拿取液晶显示模块时需注意操作人员的接地情况。
- 请手持液晶显示模块的边沿取放模块, 防止热压纸或 TAB 部位受力。
- 焊接液晶模块时, 请注意控制烙铁的温度、焊接时间, 以免烫坏导光板或偏光片, 导致显示不均匀等不良现象发生。
- 请勿使用洗板水等腐蚀性液体接触液晶模块, 以免腐蚀导光板或模块电路。
- 仅可使用柔软的干布, 异丙醇或乙醇清洁液晶屏表面, 其他任何溶剂 (如: 水) 都有可能损坏液晶模块。
- 请勿挤压液晶显示模块上的元器件, 以避免产生潜在的损坏或失效而影响产品可靠性。
- 装配液晶显示模块时, 请务必注意避免液晶显示模块的扭曲或变形。
- 请勿挤压液晶显示屏表面, 这将导致显示颜色的异常。
- 液晶屏由玻璃制作而成, 任何机械碰撞 (如从高处跌落) 均有可能损坏液晶显示模块。

dropping from high place) will damage the LCD module.

- Protective film is attached on LCD screen. Be careful when peeling off this protective film, since static electricity may be generated.
- Polarizer on LCD gets scratched easily. If possible, do not remove LCD protective film until the last step of installation.
- When peeling off protective film from LCD, static charge may cause abnormal display pattern. The symptom is normal, and it will turn back to normal in a short while.
- LCD panel has sharp edges, please handle with care.
- Never attempt to disassemble or rework LCD module.
- If display panel is damaged and liquid crystal substance leaks out, be sure not to get any in your mouth, if the substance comes into contact with your skin or clothes promptly wash it off using soap and water.

- 液晶屏表面带有保护膜，揭除保护膜时需要注意可能产生的静电。
- 因液晶显示屏表面的偏光片极易划伤，安装完成之前请尽量不要揭下保护膜。
- 请缓慢揭除保护膜，在此过程中液晶显示屏上可能会产生静电，此为正常情况，可在短时间内消失。
- 请注意避免被液晶显示屏的边缘割伤。
- 请不要试图拆卸或改造液晶显示模块。
- 当液晶显示屏出现破裂，内部液晶液体可能流出；相关液体不可吞吃，绝对不可接触嘴巴，如接触到皮肤或衣服，请使用肥皂与清水彻底清洗。

10. CTP Mounting Instructions

10.1 Bezel Mounting (Figure 1)

- The bezel window should be bigger than the CTP active area. It should be $\geq 0.5\text{mm}$ each side.
- Gasket should be installed between the bezel and the CTP surface. The final gap should be about $0.5\sim 1.0\text{mm}$.
- It is recommended to provide an additional support bracket for backside support when necessary (e.g. slim type TFT module without mounding structure). They should only provide appropriate support and keep the module in place.
- The mounting structure should be strong enough to prevent external uneven force or twist act onto the module.

10. 电容触摸屏安装指导

10.1 面框安装（附图 1）

- 客户面框窗口应大于 CTP 动作区域，各边离动作区应 $\geq 0.5\text{mm}$ 。
- 面框与 CTP 面板间应垫有胶垫，其最终间隙约为 $0.5\sim 1.0\text{mm}$ 。
- 建议必要时在背面提供附加支架（例如无安装结构的薄型 TFT 模块），应仅利用适当支撑以保持模块位置。
- 安装结构应具有足够的强度，以防止外部不均匀力或扭曲力作用到模块上。

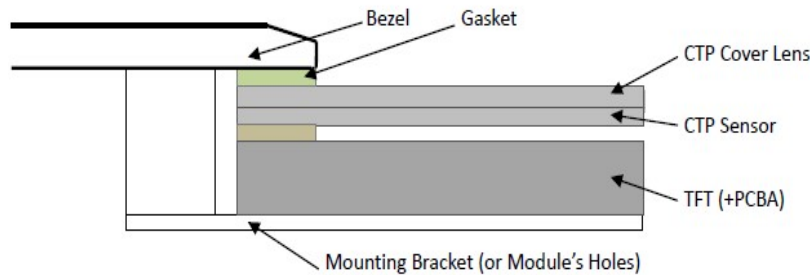


Figure 1

10.2 Surface Mounting (Figure 2)

- As the CTP assembling on the countersink area with double side adhesive. The countersink area should be flat and clean to ensure the double side adhesive installation result.
- The Bezel is recommend to keep a gap ($\geq 0.3\text{mm}$ each side) around the cover lens for tolerance.
- It is recommended to provide an additional support bracket with gasket for backside support when necessary (e.g. TFT module without mounding structure). They should only provide appropriate support and keep the module in place.
- The mounting structure should be strong enough to prevent external uneven force or twist act onto the module

10.2 嵌入安装（附图 2）

- 客户面框应具有使用双面胶粘贴 CTP 的结构沉台面，其粘贴面要求平整且洁净无污染以保证粘贴牢靠。
- 考虑到制作误差，建议面框与 CTP 盖板之间四周留有 $\geq 0.3\text{mm}$ 间隙。
- 建议必要时在背面提供垫有胶垫附加支架（例如无安装结构的 TFT 模块），应仅利用适当支撑以保持模块位置。
- 安装结构应具有足够的强度，以防止外部不均匀力或扭曲力作用到模块上。

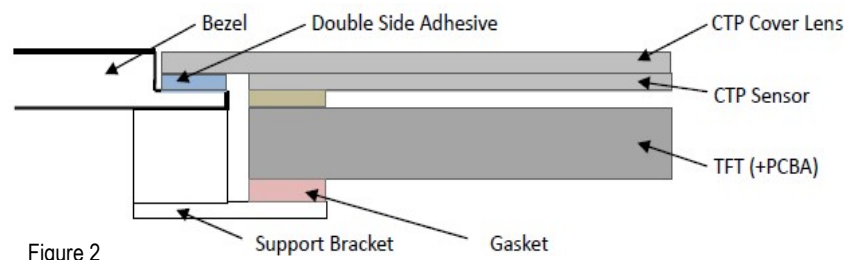


Figure 2

10.3 Additional Cover Lens Mounting (Figure 3)

- For the case of additional cover Lens mounting, it is necessary to recheck with the CTP specification about the material and thickness to ensure the functionality.
- It should keep a 0.2~0.3mm gap between the cover lens and the CTP surface..
- The cover lens window should be bigger than the active area of the CTP.It should be $\geq 0.5\text{mm}$ each side.
- It is recommended to provide an additional support bracket for backside support when necessary (e.g. slim type TFT module without mounding structure). They should only provide appropriate support and keep the module in place.
- The mounting structure should be strong enough to prevent external uneven force or twist act onto the module.

10.3 覆加盖板 (附图 3)

- 需要覆加玻璃盖板的安装, 为确保其功能, 有必要查看产品规格书中有关盖板材料和厚度的说明.
- 玻璃盖板与 CTP 表面之间应留有 0.2~0.3mm 间隙.
- 玻璃盖板视窗应大于 CTP 动作区域, 各边离动作区应 $\geq 0.5\text{mm}$.
- 建议必要时在背面提供附加支架 (例如无安装结构的薄型 TFT 模块), 应仅利用适当支撑以保持模块位置.
- 安装结构应具有足够的强度, 以防止外部不均匀力或扭曲力作用到模块上.

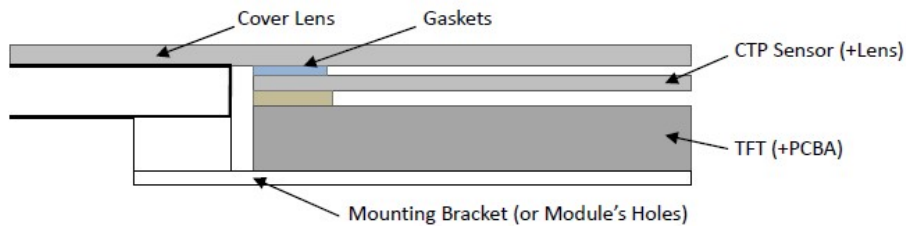


Figure 3

11. RTP Mounting Instructions

- It should bezel touching the RTP Active Area (A.A.) to prevent abnormal touch.It should left gab $D=0.2\sim 0.3\text{mm}$ in between. (Figure 4)
- Outer bezel design should take care about the area outside the A.A. Those areas contain circuit wires which is having different thickness. Touching those areas could de-form the ITO film. As a result bezel the ITO film be damaged and shorten its lifetime. It is suggested to protect those areas with gasket (between the bezel and RTP).The suggested figures are $B\geq 0.50\text{mm}$; $C\geq 0.50\text{mm}$. (Figure 4)
- The bezel side wall should keep space $E=0.2\sim 0.3\text{mm}$ from the RTP. (Figure 4)

11. 电阻触摸屏安装指导

- 为避免面框直接压在动作区 (A. A.) 上造成误动作, 面框与电阻触摸屏 (RTP) 之间应留有一定的空隙 $D=0.2\sim 0.3\text{mm}$ 之间. (附图 4)
- 设计面框时, 要注意用面框保护触摸屏四周的非保证操作区域, 因为布线区域在此处形成一台阶, 在此区域附近操作时 ITO Film 变形较大, 容易导致 ITO 损坏而降低寿命. 为保护 RTP 和避免误操作, 在 RTP 与面框之间垫缓冲物 (Gasket), 我们建议设计面框应覆盖动作区的边缘, 面框边缘到 V. A. 区的距离 $B\geq 0.50\text{mm}$; 垫圈内边缘到 V. A. 区的距离 $C\geq 0.50\text{mm}$. (附图 4)
- 在设计面框与 RTP 组装时, 应考虑到面框内侧与 RTP 外侧的间距 $E\geq 0.2\text{mm}$. (附图 4)

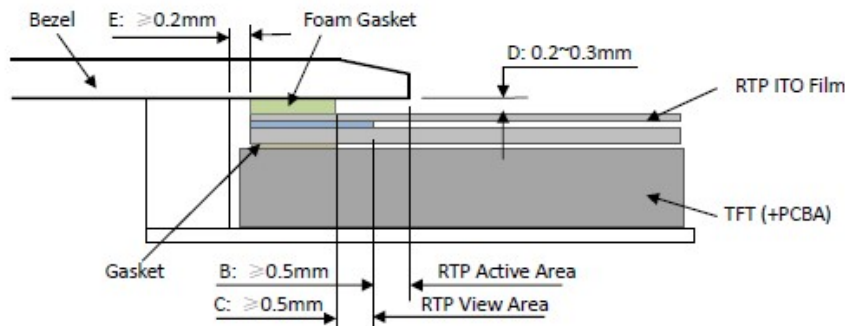


Figure 4

- In general design, RTP V.A. should be bigger than the TFT V.A. and RTP A.A. should be bigger than the TFT A.A. (Figure 5)

- 通常设计时：RTP 的可视区 V. A. 应不小于 TFT 的可视区 V. A. 及 RTP 的动作区 A. A. 应不小于 TFT 的动作区 A. A. (附图 5)

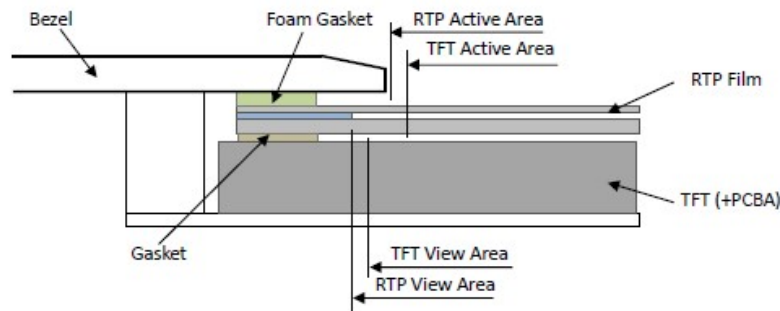
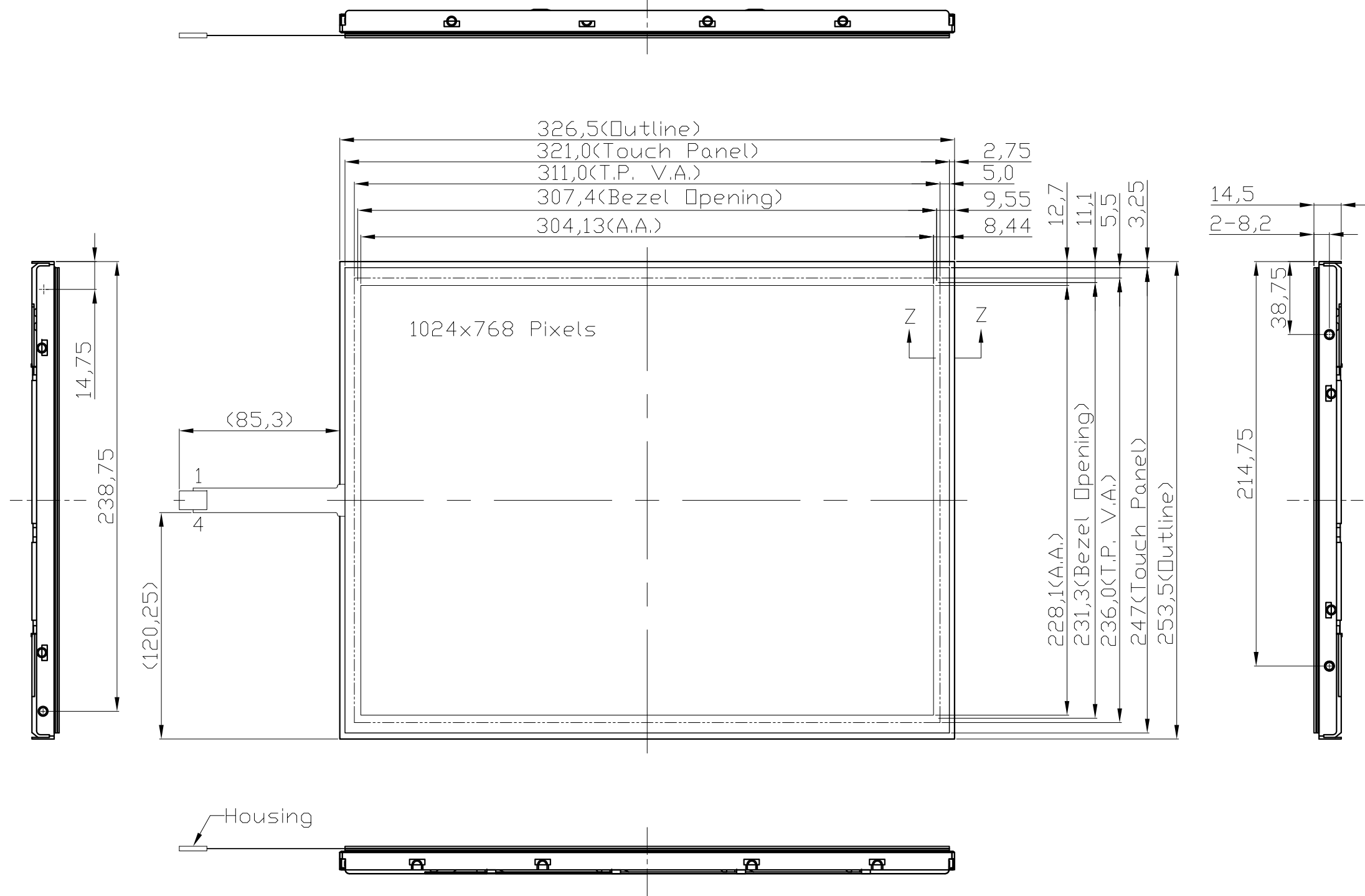


Figure 5

Warranty

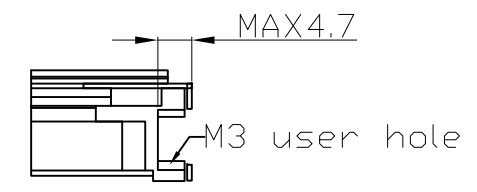
This product has been manufactured to our company's specifications as a part for use in your company's general electronic products. It is guaranteed to perform according to delivery specifications. For any other use apart from general electronic equipment, we cannot take responsibility if the product is used in medical devices, nuclear power control equipment, aerospace equipment, fire and security systems, or any other applications in which there is a direct risk to human life and where extremely high levels of reliability are required. If the product is to be used in any of the above applications, we will need to enter into a separate product liability agreement.

- We cannot accept responsibility for any defect, which may arise from additional manufacturing of the product (including disassembly and reassembly), after product delivery.
- We cannot accept responsibility for any defect, which may arise after the application of strong external force to the product.
- We cannot accept responsibility for any defect, which may arise due to the application of static electricity after the product has passed our company's acceptance inspection procedures.
- When the product is in CCFL models, CCFL service life and brightness will vary according to the performance of the inverter used, leaks, etc. We cannot accept responsibility for product performance, reliability, or defect, which may arise.
- We cannot accept responsibility for intellectual property of a third part, which may arise through the application of our product to our assembly with exception to those issues relating directly to the structure or method of manufacturing of our product.

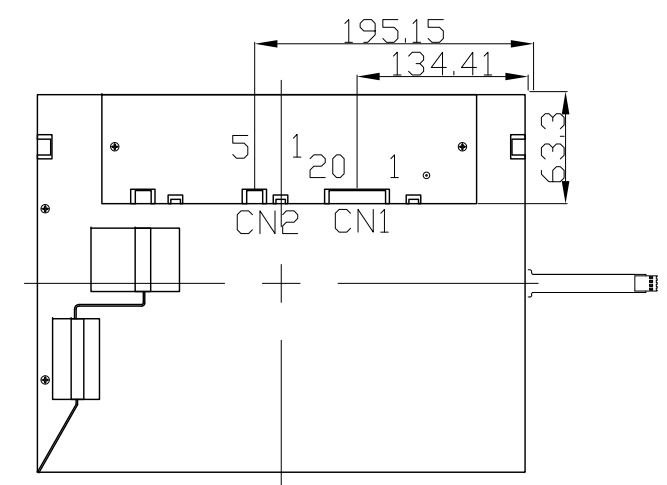


CN2 Terminal	
No	Pin Name
1	NC
2	PWM
3	BRTC
4	GND
5	VDD

CN1 Terminal	
No	Pin Name
1	VCC
2	VCC
3	GND
4	REV
5	D0-
6	D0+
7	GND
8	D1-
9	D1+
10	GND
11	D2-
12	D2+
13	GND
14	CLK-
15	CLK+
16	GND
17	D3-
18	D3+
19	NC
20	SEL6/8

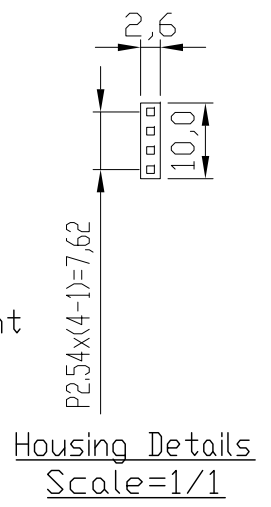


SECTION Z-Z
Scale=2/5

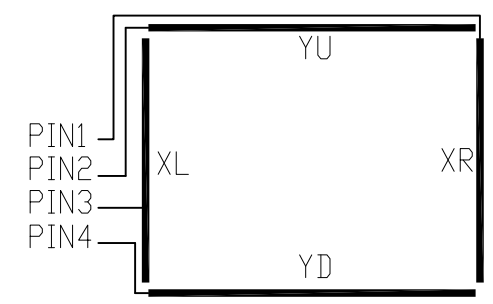


Back Side View
Scale=1/5

- Note:
- *1. LCD Display Type: TFT, Transmissive
 - *2. Pixel Arrangement: RGB VERTICAL STRIPE
 - *3. Color Depth: 16.2M/262K
 - *4. Operating Voltage: 3.3V
 - *5. Backlight Supply: 12.0V
 - *6. Backlight: White LED
 - *7. CN1: SOCKET 185083-20121 (P-TWO ELECTRIC TECHNOLOGY CO., LTD.) or equivalent
 - *8. CN2: MSB24038P5 (PRODUCED BY STM) or equivalent
 - *9. Operating Temperature: -10°C~60°C
 - *10. Storage Temperature: -20°C~70°C
 - *11. Foam Gasket Must Be Assembled Outside TP VA By 0.5mm.
 - *12. Touch Panel Type: Resistive Touch Panel



Housing Details
Scale=1/1



Touch Panel Logic Details
Scale=1/1

C		
B		
A	Revise Temperature	2016-06-15 He Hong Liang
Rev	Note	Date
Dwg	Title	LMT150DNGFWD-NNA-1 Outline Dwg
Dwg No.	MK-005580a-1-1	Date 2016-05-12
Scale	2/5	Tol. ±0.5
Unit	mm	Paper Size A3
Approved	Checked	Drawn He Hong Liang

