

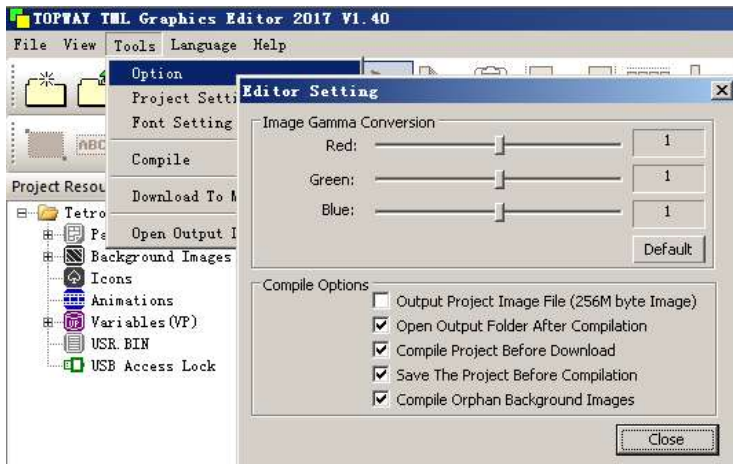
## Multiple Display Projects in one Smart LCD Module.

In some special situations, you may need to put multiple individually designed Smart LCD display projects into one Smart LCD Module.

It is possible to do that. However, we should try to plan the whole display UI into one project.

Procedure:

1. In Editor Setting, select "Open Output Folder After Compilation"



2. Press F7 to compile the 1st display project



3. The output folder will show up two folders inside. Copy them in the SmartLCD



4. Do the same for the 2nd display project and rename as FONT01, THMT01. Copy them into the Smart LCD
5. Do the same for the 3rd display project and rename as FONT02, THMT02 and so on. Copy them all into the Smart LCD
6. Then, there will be several folders inside the Smart LCD  
eg. \FONT, \THMT, \FONT01, \THMT01, ...
7. Power on the Smart LCD, 1st display project will be show on screen (\FONT, \THMT)
8. Now, it can use project select command to select the 2nd project (\FONT01, \THMT01)  
"AA E1 01 CC 33 C3 3C"

Note,

The Smart LCD will always start up at the 1st project (\FONT, \THMT) as default

-Done-