



深圳市拓普微科技开发有限公司

SHENZHEN TOPWAY TECHNOLOGY CO., LTD.

# LMT090DICFWD-2

## LCD Module User Manual

Prepared by:  <b>Chenzhonghua</b>  Date: 2023-11-24	Checked by:    Date:	Approved by:    Date:
---	----------------------------------	-----------------------------------

Rev.	Descriptions	Edit	Release Date
0.1	Preliminary release	chenzhonghua	2023-11-24

## Table of Content

<b>1. Applications</b> .....	<b>3</b>
<b>2. General Specification</b> .....	<b>3</b>
<b>3. Block Diagram</b> .....	<b>3</b>
<b>4. Terminal Function</b> .....	<b>4</b>
4.1 TFT Input Terminal .....	4
<b>5. Absolute Maximum Ratings</b> .....	<b>5</b>
<b>6. Electrical Characteristics</b> .....	<b>5</b>
6.1 DC Characteristics .....	5
6.2 Current Consumption .....	5
6.3 LED Backlight Circuit Characteristics .....	5
6.4 Power Sequence .....	6
<b>7. AC Characteristics</b> .....	<b>8</b>
7.1 Timing Characteristics .....	8
7.2 Input Clock and Data Timing Diagram .....	8
7.3 Timing .....	9
7.4 Data Input Format .....	10
7.5 Optical Characteristics .....	11
<b>8. LCD Module Design and Handling Precautions</b> .....	<b>12</b>
<b>9. CTP Mounting Instructions</b> .....	<b>13</b>
<b>10. RTP Mounting Instructions</b> .....	<b>14</b>
<b>11. Warranty</b> .....	<b>15</b>
<b>12. TFT QA Standard</b> .....	<b>16</b>
12.1 INSPECTION CONDITION 检验条件 .....	16
12.2 Display Pattern 显示缺陷 .....	16
12.3 Quality Level and Sampling 抽样方法 .....	17
12.4 Handling Precaution 使用注意事项 .....	17

## 1. Applications

This Module is designed for portable DVD, GPS car TV & PMP(portable multimedia player) application which require high quality flat panel displays. It is also a good substitute for many outmoded CSTN module in the industrial application.  
 This product is composed of a TFT-LCD panel, driver ICs, FPC and LED backlight unit.

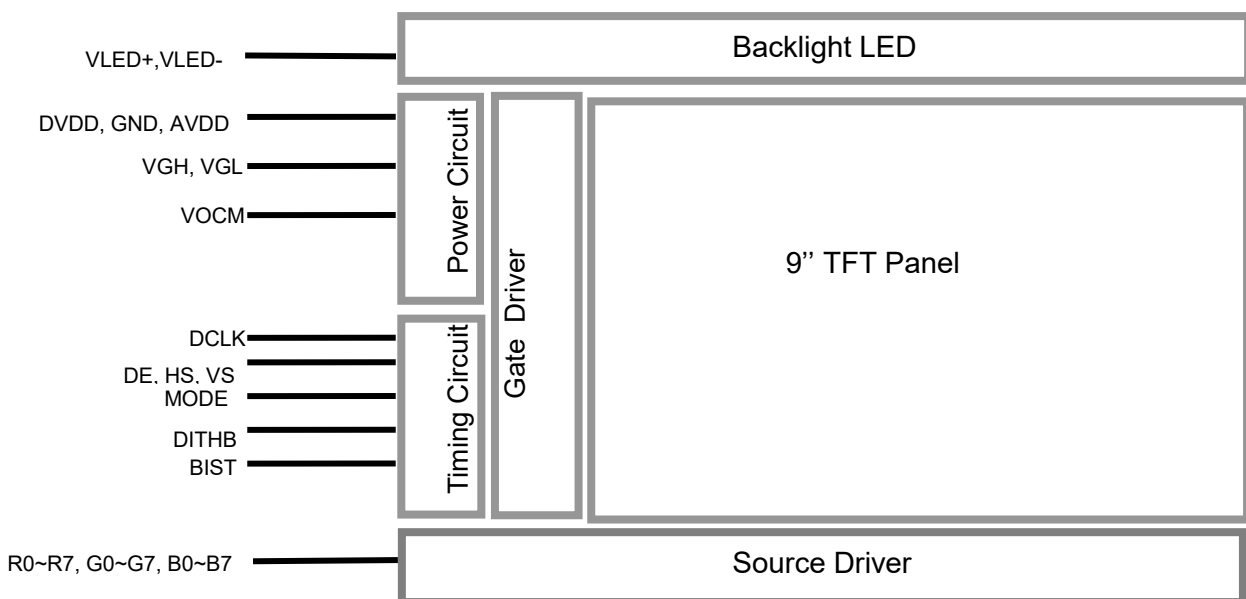
## 2. General Specification

Signal Interface :	Digital 24-bits RGB
Display Technology :	a-Si TFT active matrix
Display Mode :	Transmissive / Normal White
Screen Size(Diagonal) :	9.0"
Outline Dimension :	211.1 x 126.5 x 5.9 (mm) (see attached drawing for details)
Active Area :	198.0 x 111.7 (mm)
Number of dots :	800 x 3 (RGB) x 480
Pixel Pitch :	0.0825 x 0.2327 (mm)
Pixel Configuration :	RGB Stripe
Backlight :	LED
Surface Treatment:	Anti-Glare
Viewing Direction :	6 o'clock(Gray scale Inversion) (*1) 12 o'clock (*2)
Operating Temperature :	-20 ~ +70°C
Storage Temperature :	-30 ~ +80°C

**Note:**

- \*1. For saturated color display content (eg. pure-red, pure-green, pure-blue or pure-colors-combinations).
- \*2. For “color scales” display content.
- \*3. Color tone may slightly change by temperature and driving condition.

## 3. Block Diagram



## 4. Terminal Function

### 4.1TFT Input Terminal

Pin No.	Pin Name	I/O	Descriptions
1	VLED+	Power	Positive Backlight Power Supply
2	VLED+		
3	VLED-	Power	Negative Backlight Power Supply
4	VLED-		
5	GND	Power	Power GND (0V)
6	VCOM	Input	Common voltage
7	DVDD	Power	Power for Digital Circuit
8	MODE	Input	DE/SYNC mode select (*1)
9	DE	Input	Data input enable
10	VS	Input	Vertical Sync Input
11	HS	Input	Horizontal Sync Input
12	B7	Input	8bit Data for Blue
:	:		
19	B0		
20	G7	Input	8bit Data for Green
:	:		
27	G0		
28	R7	Input	8bit Data for Red
:	:		
35	R0		
36	GND	Power	Power GND (0V)
37	DCLK	Input	Sample clock(*2)
38	GND	Power	Power GND (0V)
39	L/R	Input	Left / right selection (*3)
40	U/D	Input	Up/down selection (*3)
41	VGH	Power	Gate ON Voltage
42	VGL	Power	Gate OFF Voltage
43	AVDD	Power	Power for Analog Circuit
44	RESET	Input	Global reset pin (*4)
45	NC	-	No connection
46	VCOM	Input	Common Voltage
47	DITHB	Input	Dithering function (*5)
48	BIST	Input	BIST mode control signal(*6)
49	NC	-	No connection
50	NC		

Note:

- \* 1: DE/SYNC mode select. Normally pull high.  
When select DE mode, MODE="1", VS and HS must pull high.  
When select SYNC mode, MODE= "0", DE must be grounded.
- \* 2: Data shall be latched at the falling edge of DCLK.
- \* 3: Selection of scanning mode

Setting of scan control input		Scanning direction
U/D	L/R	
GND	DVDD	Up to down, left to right
DVDD	GND	Down to up, right to left
GND	GND	Up to down, right to left
DVDD	DVDD	Down to up, left to right

- \*4: Global reset pin. Active low to enter reset state. Suggest to connect with an RC reset circuit for stability. Normally pull high.
- \*5: Dithering function enable control, normally pull high.  
When DITHB="1", Disable internal dithering function,  
When DITHB="0", Enable internal dithering function,
- \*6: BIST Mode enable control, normally pull low. Suggest connecting this pin to ground.  
When BIST="1", enter to BIST pattern display mode.  
When BIST="0", normally display mode.

## 5. Absolute Maximum Ratings

Items	Symbol	Min.	Max.	Unit	Condition
Power voltage	DV <sub>DD</sub>	-0.3	5.0	V	
	AV <sub>DD</sub>	-0.5	13.5	V	
	V <sub>GH</sub>	13.0	19.0	V	
	V <sub>GL</sub>	-12.0	-2.0	V	
Operating Temperature	T <sub>OP</sub>	-20	70	C	No Condensation
Storage Temperature	T <sub>ST</sub>	-30	80	C	No Condensation

Note:

- \*1. This rating applies to all parts of the module. And should not be exceeded.
- \*2. The operating temperature only guarantees operation of the circuit. The contrast, response speed, and the other specification related to electro-optical display quality is determined at the room temperature, T<sub>OP</sub>=25.
- \*3. Ambient temperature when the backlight is lit (reference value)
- \*4. Any Stresses exceeding the Absolute Maximum Ratings may cause substantial damage to the device. Functional operation of this device at other conditions beyond those listed in the specification is not implied and prolonged exposure to extreme conditions may affect device reliability.

## 6. Electrical Characteristics

### 6.1 DC Characteristics

Items	Symbol	Min.	Typ.	Max.	Unit	Remark
Power voltage	DV <sub>DD</sub>	3.0	3.3	3.6	V	*2
	AV <sub>DD</sub>	10.6	10.8	11	V	
	V <sub>GH</sub>	16.3	17.0	17.7	V	
	V <sub>GL</sub>	-5.7	-5.0	-4.3	V	
Input signal voltage	V <sub>COM</sub>	4.1	4.6	5.1	V	
Input logic high voltage	V <sub>IH</sub>	0.7DV <sub>DD</sub>	-	DV <sub>DD</sub>	V	*3
Input logic low voltage	V <sub>IL</sub>	0	-	0.3DV <sub>DD</sub>	V	

Note:

- \*1. Be sure to apply DVDD and VGL to the LCD first, and then apply VGH.
- \*2: DVDD setting should match the signals output voltage (refer to Note 3) of customer's system board.
- \*3: DCLK,HS,VS,RESET,U/D, L/R,DE,R0~R7,G0~G7,B0~B7,MODE,DITHB.

### 6.2 Current Consumption

Items	Symbol	Min.	Typ.	Max.	Unit	Remark
Current for Driver	I <sub>GH</sub>	0.05	0.3	1.0	mA	V <sub>GH</sub> = 17.0V
	I <sub>GL</sub>	0.05	0.3	1.0	mA	V <sub>GL</sub> = -5.0V
	IDV <sub>DD</sub>	10	15	20	mA	DV <sub>DD</sub> =3.3V
	I <sub>AV<sub>DD</sub></sub>	12	22	32	mA	AV <sub>DD</sub> =10.8V @Black Pattern

### 6.3 LED Backlight Circuit Characteristics

Top=25°C

Items	Symbol	MIN.	TYP.	MAX.	Unit	Note
Forward Voltage	V <sub>fBLA</sub>	8.4	9.3	10.2	V	
Forward Current	I <sub>fBLA</sub>	198	220.0	242	mA	
LED life time	-	20000	-	-	Hr	Note 2

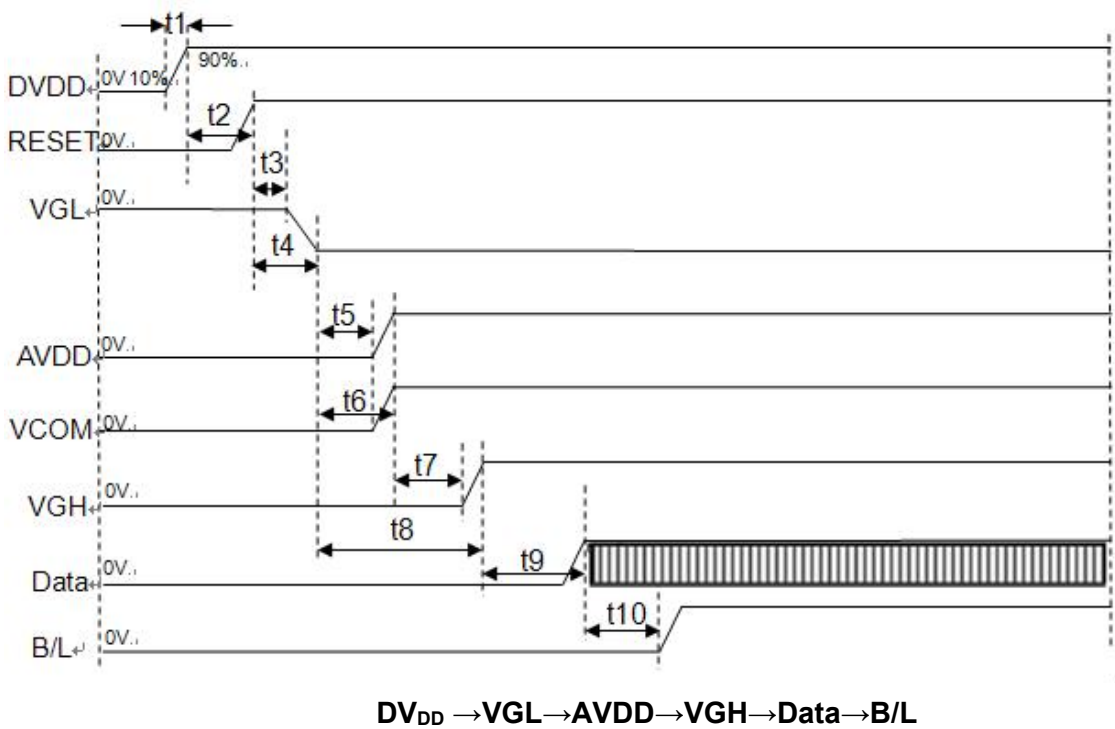
Cautions:

Exceeding the recommended driving current could cause substantial damage to the backlight and shorten its lifetime.

Note 2: The "LED life time" is defined as the module brightness decrease to 50% original brightness at Ta=25°C and I<sub>L</sub> =220mA. The LED lifetime could be decreased if operating I<sub>L</sub> is larger than 220 mA.

**6.4 Power Sequence**

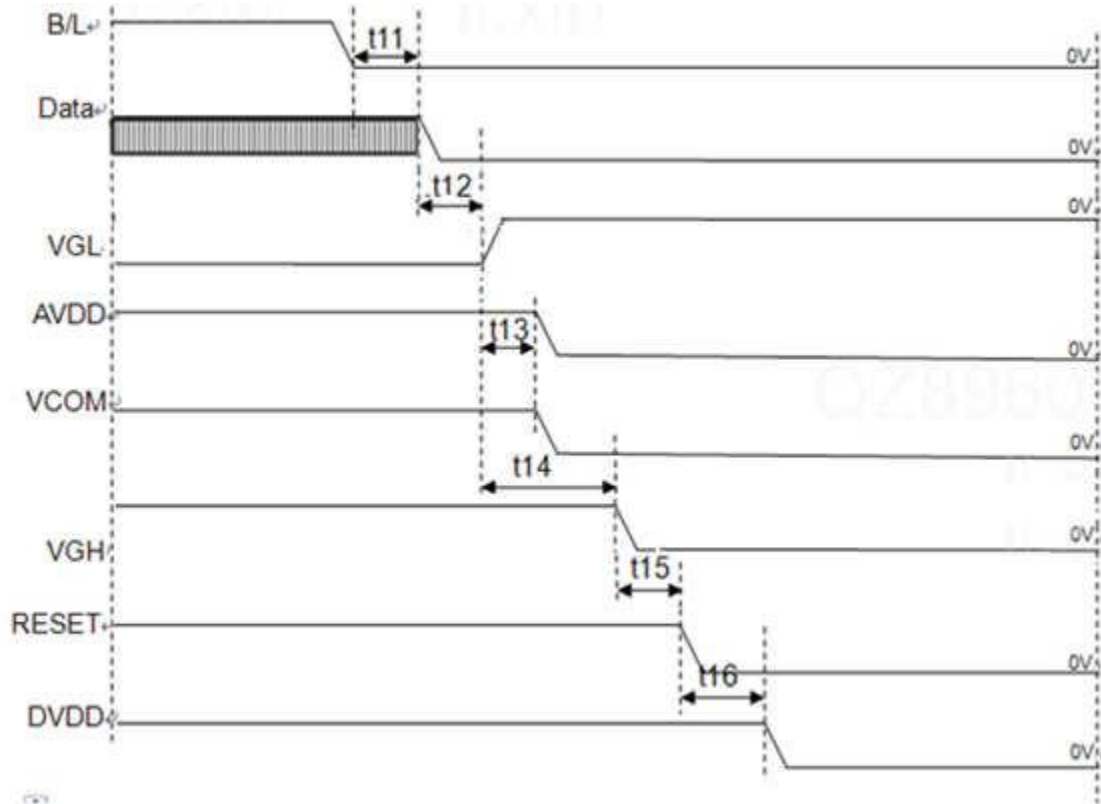
6.4.1 Power on:



Symbol	SPEC			Unit
	Min.	Typ.	Max.	
t1	0.5	5	20	ms
t2	1	1	1.5	ms
t3	10	15	20	ms
t4	20	22	24	ms
t5	1	2	3	ms
t6	5	6	7	ms
t7	1.5	2	4	ms
t8	10	12	15	ms
t9	120	150	200	ms
t10	180	190	200	ms

Note: Data include R0~R7, B0~B7, GO~G7, U/D, L/R, DCLK, HS, VS, DE.  
 Note: Be sure to apply DVDD and VGL to the LCD first, and then apply VGH

6.5.2 Power off:



**B/L→Data→VGL→AVDD→VGH→DVDD**

Symbol	SPEC			Unit
	Min.	Typ.	Max.	
t1	180	190	200	ms
t2	10	15	20	ms
t3	5	6	7	ms
t4	10	12	15	ms
t5	20	22	24	ms
t6	1	1.5	3	ms

Note : Data include R0~R7,B0~B7,G0~G7,U/D,L/R,DCLK,HS,VS,DE.

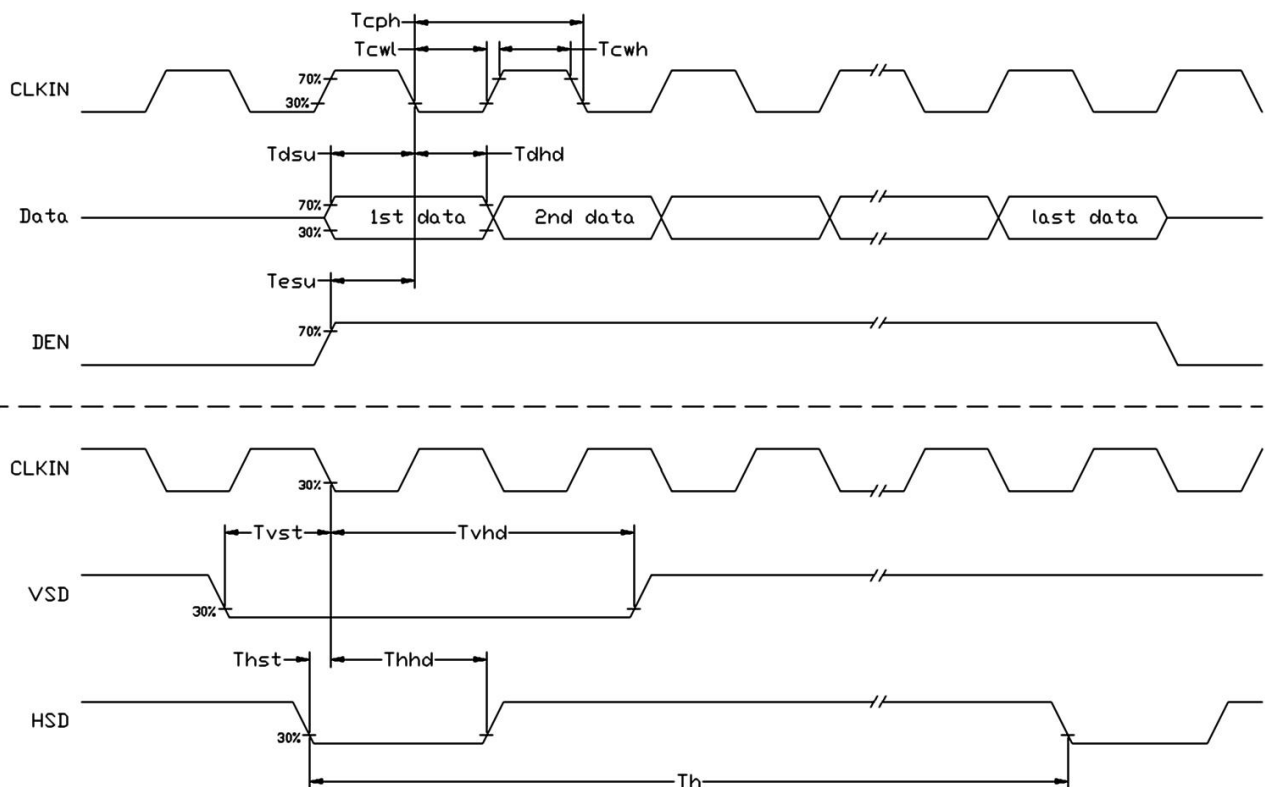
## 7. AC Characteristics

### 7.1 Timing Characteristics

Item	Symbol	MIN.	TYP.	MAX.	Unit	Remark
HS setup time	Thst	8	10	12	ns	
HS hold time	Thhd	8	10	12	ns	
VS setup time	Tvst	8	10	12	ns	
VS hold time	Tvhd	8	10	12	ns	
Data setup time	Tdsu	8	10	12	ns	R[7:0],G[7:0], B[7:0] to DCLK
Data hole time	Tdhd	8	10	12	ns	R[7:0],G[7:0], B[7:0] to DCLK
DE setup time	Tesu	8	10	12	ns	
DE hole time	Tehd	8	10	12	ns	
DV <sub>DD</sub> Power On Slew rate	TPOR	0.5	5	20	ms	From 0 to 90% DV <sub>DD</sub>
RESET pulse width	TRST	1	2	5	ms	
DCLK cycle time	Tcph	20	30	33	ns	
DCLK pulse duty	Tcwh	40	50	60	%	

Note: For the details of the timing, please see the Driver IC data sheet.

### 7.2 Input Clock and Data Timing Diagram





**7.3 Timing**

Item	Symbol	MIN.	TYP.	MAX.	Unit	Remark
Horizontal Display Area	thd	-	800	-	DCLK	
DCLK Frequency	fclk	26.4	33.3	46.8	MHz	
One Horizontal Line	th	862	1056	1200	DCLK	
HS pulse width	thpw	1	6	40	DCLK	
HS Blanking	thb	46	46	46	DCLK	
HS Front Porch	thfp	16	210	354	DCLK	

Item	Symbol	MIN.	TYP.	MAX.	Unit	Remark
Vertical Display Area	tvd	-	480	-	TH	
VS period time	tv	510	525	650	TH	
VS pulse width	tvpw	1	3	20	TH	
VS Blanking	tvb	23	23	23	TH	
VS Front Porch	tvfp	7	22	147	TH	

7.4 Data Input Format

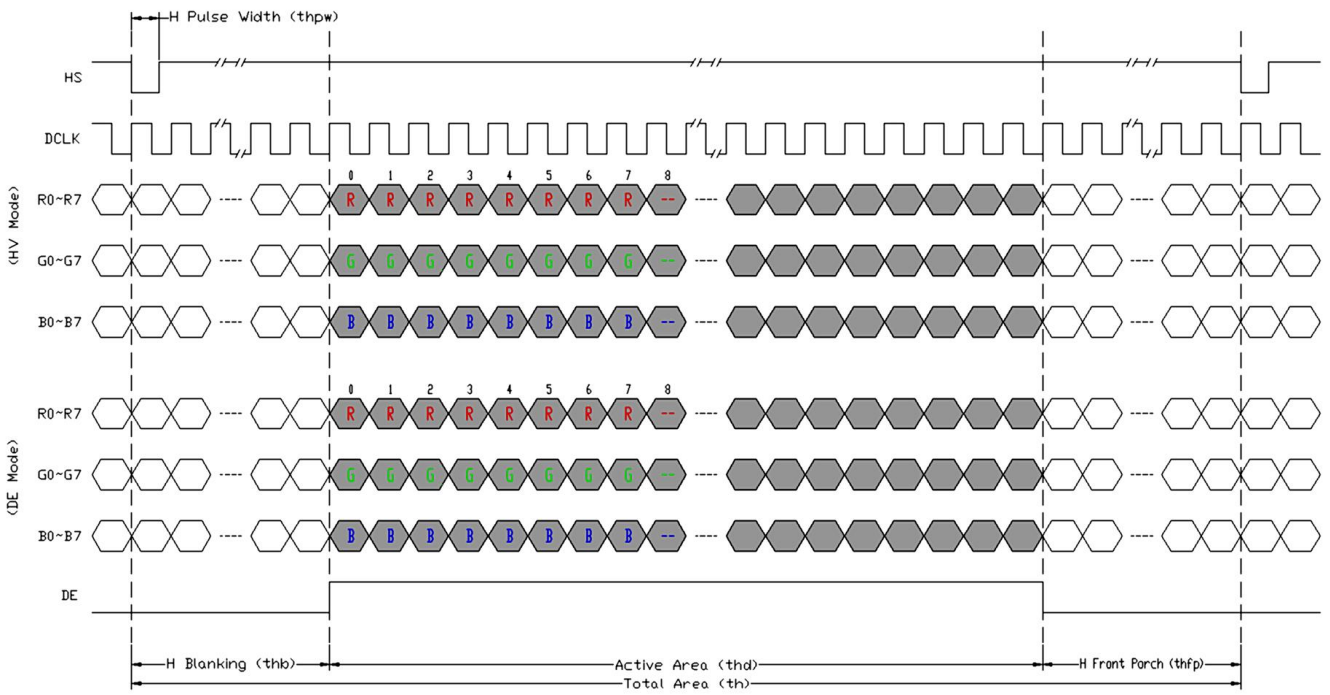


Figure 6-2-1 Horizontal input timing diagram.

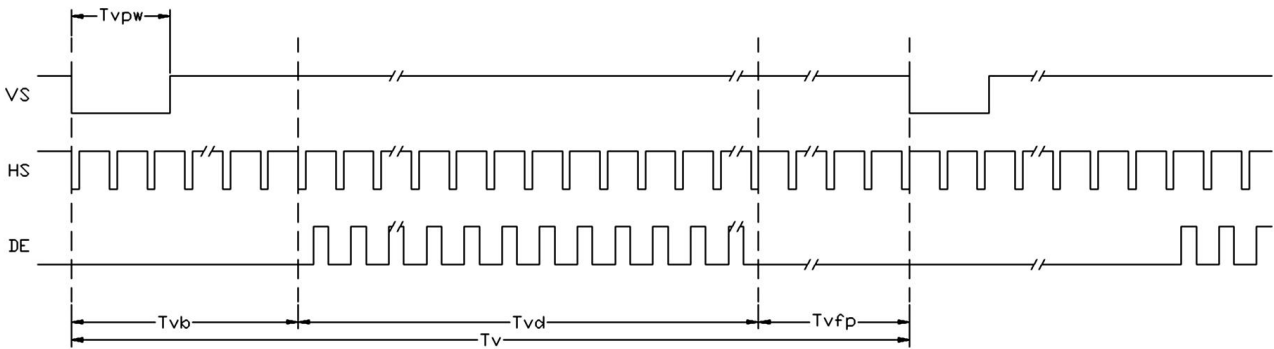


Figure 6-2-2 Vertical input timing diagram.

**7.5 Optical Characteristics**

Test Conditions:

1. VCC=3.3V, Vf<sub>BLA</sub> =9.6V , the ambient temperature is 25°C.
2. Exclude Touch Panel.

Item	Symbol	Condition	MIN.	TYP.	MAX.	UNIT	Note.
Viewing angle (CR≥10)	θ <sub>L</sub>	9 o'clock	60	70	-	degree	*2
	θ <sub>R</sub>	3 o'clock	60	70	-		
	θ <sub>T</sub>	12 o'clock	40	50	-		
	θ <sub>B</sub>	6 o'clock	60	70	-		
Response Time	T <sub>f</sub>	Normal θ=0°	-	10	20	msec	*3
	T <sub>r</sub>		-	15	30	msec	
Contrast ratio	CR		400	500	-	-	*1
Color chromaticlty	W <sub>X</sub>		0.26	0.31	0.36	-	
	W <sub>Y</sub>		0.28	0.33	0.38	-	
Luminance	L		250	300	-	cd/m <sup>2</sup>	*4
Luminance uniformity	Y <sub>U</sub>		70	75	-	%	*4

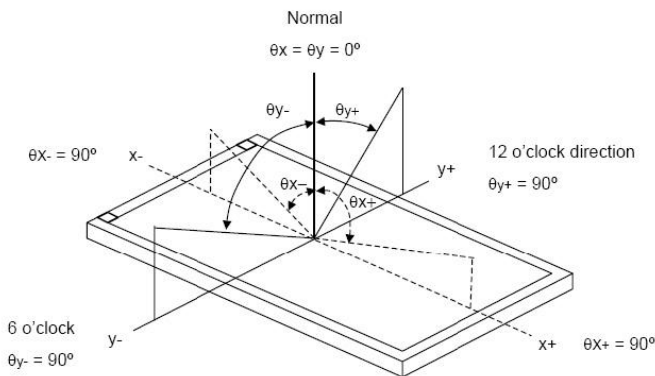
Note:

\*1. Definition of Contrast Ratio

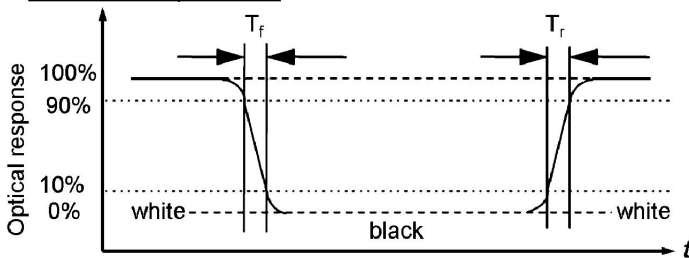
The contrast ratio could be calculate by the following expression:

Contrast Ratio (CR) = Luminanc with all pixels white / Luminance with all pixels black

\*2 Definition of Viewing Angle



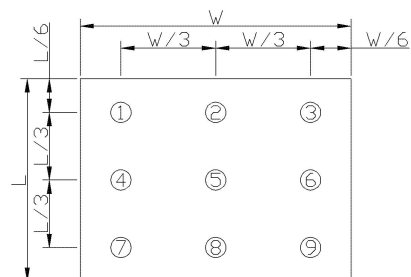
\*3 Definition of response time



\*4 Definition of Luminance Uniformity

Luminance uniformity (Lu)=

Min. Luminance form pt1~pt9 / Max Luminance form Pt1~pt9



## 8. LCD Module Design and Handling Precautions

- Please ensure V0, VCOM is adjustable, to enable LCD module get the best contrast ratio under different temperatures, view angles and positions.
- Normally display quality should be judged under the best contrast ratio within viewable area. Unexpected display pattern may come out under abnormal contrast ratio.
- Never operate the LCD module exceed the absolute maximum ratings.
- Never apply signal to the LCD module without power supply.
- Keep signal line as short as possible to reduce external noise interference.
- IC chip (e.g. TAB or COG) is sensitive to light. Strong light might cause malfunction. Light sealing structure casing is recommended.
- Make sure there is enough space (with cushion) between case and LCD panel, to prevent external force passed on to the panel; otherwise that may cause damage to the LCD and degrade its display result.
- Avoid showing a display pattern on screen for a long time (continuous ON segment).
- LCD module reliability may be reduced by temperature shock.
- When storing and operating LCD module, avoid exposure to direct sunlight, high humidity, high or low temperature. They may damage or degrade the LCD module.
- Never leave LCD module in extreme condition (max./min storage/operate temperature) for more than 48hr.
- Recommend LCD module storage conditions is 0 C~40 C <80%RH.
- LCD module should be stored in the room without acid, alkali and harmful gas.
- Avoid dropping & violent shocking during transportation, and no excessive pressure press, moisture and sunlight.
- LCD module can be easily damaged by static electricity. Please maintain an optimum anti-static working environment to protect the LCD module. (eg. ground the soldering irons properly)
- Be sure to ground the body when handling LCD module.
- Only hold LCD module by its sides. Never hold LCD module by applying force on the heat seal or TAB.
- When soldering, control the temperature and duration avoid damaging the backlight guide or diffuser which might degrade the display result such as uneven display.
- Never let LCD module contact with corrosive liquids, which might cause damage to the backlight guide or

## 8. 液晶显示模块设计和使用须知

- 请注意 V0, VCOM 的设定, 以确保液晶显示模块在不同的使用温度下以及在不同的视角和位置观察模块显示, 均能达到最佳对比度, 请务必将应用电路上设置为对比度可调。
- 请注意液晶显示模块的显示品质判定是指在正常对比度下以及视窗(V.A)范围内进行的, 非正常对比度下液晶可能会出现非预期的显示不良, 应注意区分。
- 请勿在最大额定值以外使用液晶显示模块。
- 请勿在没有接通电源的条件下, 给液晶显示模块输送信号。
- 请尽可能缩短信号线的连接, 以避免对液晶显示模块的信号干扰。
- 集成电路因 IC 芯片(如 TAB 或 COG)对紫外线极为敏感, 强光环境下可能会引起液晶显示模块功能失效, 故应采用不透光的外壳。
- 请在液晶显示模块与外壳之间保留足够的空间(可使用衬垫), 以缓冲外力对液晶显示模块的损坏或因受力不均而产生的显示不匀等异常现象。
- 避免液晶显示屏在某一画面下长时间点亮, 否则有出现残影的风险; 请通过软件每隔一段时间改变一次画面。
- 液晶显示模块的可靠性可能因温度冲击而降低。
- 请勿在阳光直射、高湿、高温或低温下储存和使用液晶显示模块, 这将造成液晶显示模块的损坏或失效。
- 请勿在极限环境(最大/最小存储/工作温度)下使用或放置液晶显示模块超过 48 小时以上。
- 液晶显示模块建议存储条件为: 0 C~40 C <80%RH。
- 请勿让液晶显示模块存储于带有酸性, 碱性, 有害气体环境之中。
- 在运输过程中, 请勿让液晶显示模块跌落与猛烈震动, 同时避免异常挤压, 高湿度, 与阳光照射。
- 液晶显示模块极易受静电损坏, 请务必保证液晶显示模块在防静电的工作环境中使用或保存。(如: 烙铁正确接地, 等)
- 拿取液晶显示模块时需注意操作人员的接地情况。
- 请手持液晶显示模块的边沿取放模块, 防止热压纸或 TAB 部位受力。
- 焊接液晶模块时, 请注意控制烙铁的温度、焊接时间, 以免烫坏导光板或偏光片, 导致显示不均匀等不良现象发生。
- 请勿使用洗板水等腐蚀性液体接触液晶模块, 以免腐蚀导光板或模块电路。

the electric circuit of LCD module.

- Only clean LCD with a soft dry cloth, Isopropyl Alcohol or Ethyl Alcohol. Other solvents (e.g. water) may damage the LCD.
  - Never add force to components of LCD module. It may cause invisible damage or degrade the module's reliability.
  - When mounting LCD module, please make sure it is free from twisting, warping and bending.
  - Do not add excessive force on surface of LCD, which may cause the display color change abnormally.
  - LCD panel is made with glass. Any mechanical shock (e.g. dropping from high place) will damage the LCD module.
  - Protective film is attached on LCD screen. Be careful when peeling off this protective film, since static electricity may be generated.
  - Polarizer on LCD gets scratched easily. If possible, do not remove LCD protective film until the last step of installation.
  - When peeling off protective film from LCD, static charge may cause abnormal display pattern. The symptom is normal, and it will turn back to normal in a short while.
  - LCD panel has sharp edges, please handle with care.
  - Never attempt to disassemble or rework LCD module.
  - If display panel is damaged and liquid crystal substance leaks out, be sure not to get any in your mouth, if the substance comes into contact with your skin or clothes promptly wash it off using soap and water.
- 仅可使用柔软的干布, 异丙醇或乙醇清洁液晶屏表面, 其他任何溶剂(如:水)都有可能损坏液晶模块。
  - 请勿挤压液晶显示模块上的元器件, 以避免产生潜在的损坏或失效而影响产品可靠性。
  - 装配液晶显示模块时, 请务必注意避免液晶显示模块的扭曲或变形。
  - 请勿挤压液晶显示屏表面, 这将导致显示颜色的异常。
  - 液晶屏由玻璃制作而成, 任何机械碰撞(如从高处跌落)均有可能损坏液晶显示模块。
  - 液晶屏表面带有保护膜, 揭除保护膜时需要注意可能产生的静电。
  - 因液晶显示屏表面的偏光片极易划伤, 安装完成之前请尽量不要揭下保护膜。
  - 请缓慢揭除保护膜, 在此过程中液晶显示屏上可能会产生静电, 此为正常情况, 可在短时间内消失。
  - 请注意避免被液晶显示屏的边缘割伤。
  - 请不要试图拆卸或改造液晶显示模块。
  - 当液晶显示屏出现破裂, 内部液晶液体可能流出; 相关液体不可吞吃, 绝对不可接触嘴巴, 如接触到皮肤或衣服, 请使用肥皂与清水彻底清洗。

## 9. CTP Mounting Instructions

### 9.1 Bezel Mounting (Figure 1)

- The bezel window should be bigger than the CTP active area. It should be  $\geq 0.5\text{mm}$  each side.
- Gasket should be installed between the bezel and the CTP surface.  
The final gap should be about  $0.5\sim 1.0\text{mm}$ .
- It is recommended to provide an additional support bracket for backside support when necessary (e.g. slim type TFT module without mounding structure). They should only provide appropriate support and keep the module in place.
- The mounting structure should be strong enough to prevent external uneven force or twist act onto the module.

## 9. 电容触摸屏安装指导

### 9.1 面框安装 (附图 1)

- 客户面框窗口应大于 CTP 动作区域, 各边离动作区应  $\geq 0.5\text{mm}$ 。
- 面框与 CTP 面板间应垫有胶垫, 其最终间隙约为  $0.5\sim 1.0\text{mm}$ 。
- 建议必要时在背面提供附加支架(例如无安装结构的薄型 TFT 模块), 应仅利用适当支撑以保持模块位置。
- 安装结构应具有足够的强度, 以防止外部不均匀力或扭曲力作用到模块上。

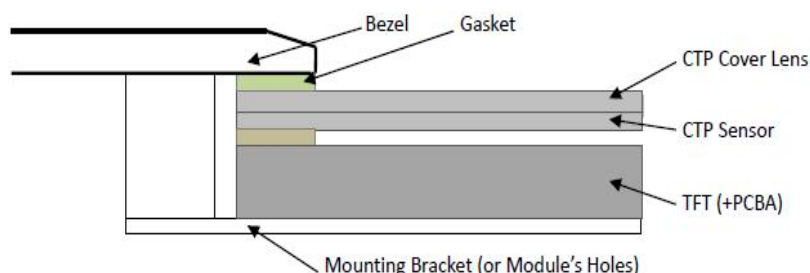


Figure 1

9.2 Surface Mounting (Figure 2)

- As the CTP assembling on the countersink area with double side adhesive.  
The countersink area should be flat and clean to ensure the double side adhesive installation result.
- The Bezel is recommend to keep a gap ( $\geq 0.3\text{mm}$  each side) around the cover lens for tolerance.
- It is recommended to provide an additional support bracket with gasket for backside support when necessary (e.g. TFT module without mounding structure). They should only provide appropriate support and keep the module in place.
- The mounting structure should be strong enough to prevent external uneven force or twist act onto the module

9.2 嵌入安装 (附图 2)

- 客户面框应具有使用双面胶粘贴 CTP 的结构沉台面，其粘贴面要求平整且洁净无污染以保证粘贴牢靠。
- 考虑到制作误差，建议面框与 CTP 盖板之间四周留有  $\geq 0.3\text{mm}$  间隙。
- 建议必要时在背面提供垫有胶垫附加支架(例如无安装结构的 TFT 模块)，应仅利用适当支撑以保持模块位置。
- 安装结构应具有足够的强度，以防止外部不均匀力或扭曲力作用到模块上。

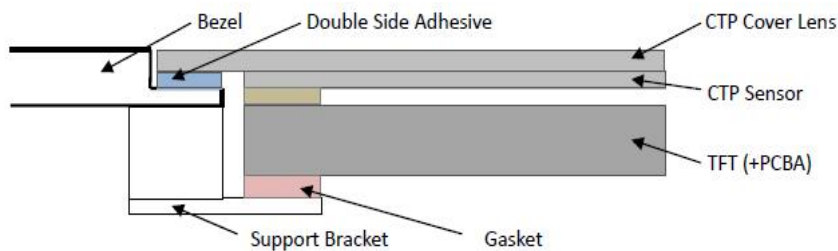


Figure 2

9.3 Additional Cover Lens Mounting (Figure 3)

- For the case of additional cover Lens mounting, it is necessary to recheck with the CTP specification about the material and thickness to ensure the functionality.
- It should keep a 0.2~0.3mm gap between the cover lens and the CTP surface..
- The cover lens window should be bigger than the active area of the CTP.It should be  $\geq 0.5\text{mm}$  each side.
- It is recommended to provide an additional support bracket for backside support when necessary (e.g. slim type TFT module without mounding structure). They should only provide appropriate support and keep the module in place.
- The mounting structure should be strong enough to prevent external uneven force or twist act onto the module.

9.3 覆加盖板 (附图 3)

- 需要覆加玻璃盖板的安装，为确保其功能，有必要查看产品规格书中有关盖板材料和厚度的说明。
- 玻璃盖板与 CTP 表面之间应留有 0.2~0.3mm 间隙。
- 玻璃盖板视窗应大于 CTP 动作区域，各边离动作区应  $\geq 0.5\text{mm}$ 。
- 建议必要时在背面提供附加支架(例如无安装结构的薄型 TFT 模块)，应仅利用适当支撑以保持模块位置。
- 安装结构应具有足够的强度，以防止外部不均匀力或扭曲力作用到模块上。

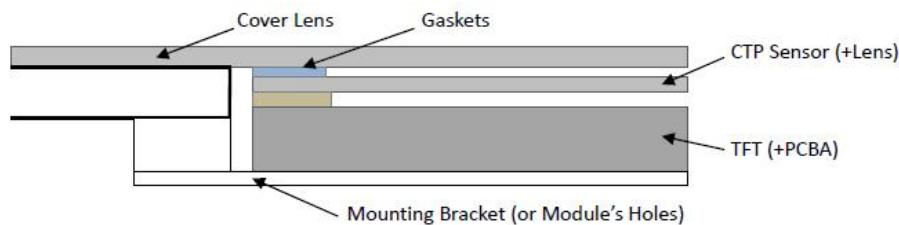


Figure 3

10. RTP Mounting Instructions

- It should bezel touching the RTP Active Area (A.A.) to prevent abnormal touch.It should left gab  $D=0.2\sim 0.3\text{mm}$  in between. (Figure 4)
- Outer bezel design should take care about the area

10. 电阻触摸屏安装指导

- 为避免面框直接压在动作区(A.A.)上造成误动作，面框与电阻触摸屏(RTP)之间应留有一定的空隙  $D=0.2\sim 0.3\text{mm}$  之间。(附图 4)
- 设计面框时，要注意用面框保护触摸屏四周的非保证操



outside the A.A. Those areas contain circuit wires which is having different thickness. Touching those areas could de-form the ITO film. As a result bezel the ITO film be damaged and shorten its lifetime.

It is suggested to protect those areas with gasket (between the bezel and RTP).The suggested figures are  $B \geq 0.50\text{mm}$ ;  $C \geq 0.50\text{mm}$ . (Figure 4)

- The bezel side wall should keep space  $E = 0.2 \sim 0.3\text{mm}$  from the RTP. (Figure 4)

作区域，因为布线区域在此处形成一台阶，在此区域附近操作时 ITO Film 变形较大，容易导致 ITO 损坏而降低寿命。为保护 RTP 和避免误操作，在 RTP 与面框之间垫缓冲物 (Gasket)，我们建议设计面框应覆盖动作区的边缘，面框边缘到 V.A.区的距离  $B \geq 0.50\text{mm}$ ；垫圈内边缘到 V.A.区的距离  $C \geq 0.50\text{mm}$ 。(附图 4)

- 在设计面框与 RTP 组装时，应考虑到面框内侧与 RTP 外侧的间距  $E \geq 0.2\text{mm}$ 。(附图 4)

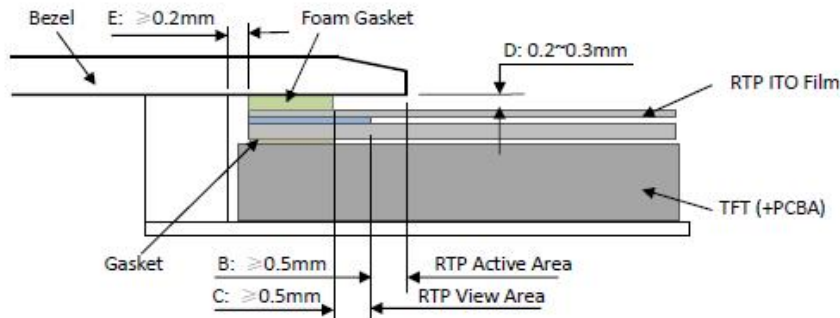


Figure 4

- In general design, RTP V.A. should be bigger than the TFT V.A. and RTP A.A. should be bigger than the TFT A.A. (Figure 5)

- 通常设计时：RTP 的可视区 V.A. 应不小于 TFT 的可视区 V.A. 及 RTP 的动作区 A.A. 应不小于 TFT 的动作区 A.A. (附图 5)

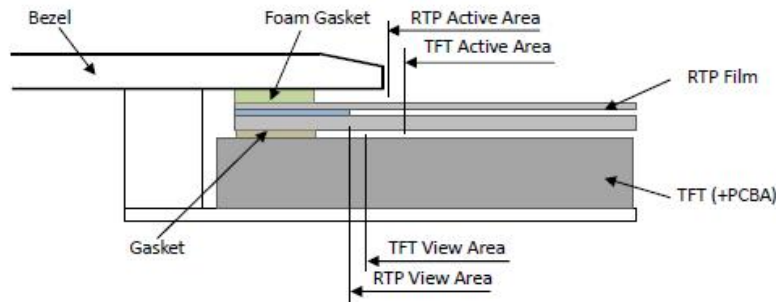


Figure 5

## 11. Warranty

This product has been manufactured to our company's specifications as a part for use in your company's general electronic products. It is guaranteed to perform according to delivery specifications. For any other use apart from general electronic equipment, we cannot take responsibility if the product is used in medical devices, nuclear power control equipment, aerospace equipment, fire and security systems, or any other applications in which there is a direct risk to human life and where extremely high levels of reliability are required. If the product is to be used in any of the above applications, we will need to enter into a separate product liability agreement.

- We cannot accept responsibility for any defect, which may arise from additional manufacturing of the product (including disassembly and reassembly), after product delivery.
- We cannot accept responsibility for any defect, which may arise after the application of strong external force to the product.
- We cannot accept responsibility for any defect, which may arise due to the application of static electricity after the product has passed our company's acceptance inspection procedures.
- When the product is in CCFL models, CCFL service life and brightness will vary according to the performance of the inverter used, leaks, etc. We cannot accept responsibility for product performance, reliability, or defect, which may arise.
- We cannot accept responsibility for intellectual property of a third part, which may arise through the application of our product to our assembly with exception to those issues relating directly to the structure or method of manufacturing of our product.

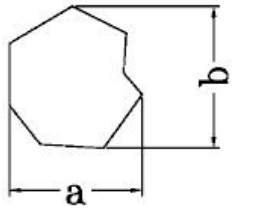
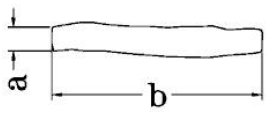
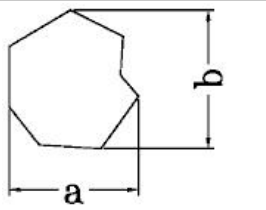
## 12. TFT QA Standard

### 12.1 INSPECTION CONDITION 检验条件


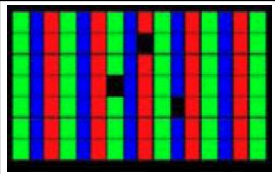
Unless otherwise stated, all the inspections are carryout under the following condition  
除非有特别的规定，检验条件按以下执行。

No.	Items 项目	Conditions 条件
1	Lighting 照明	Illumination: Appearance 200-500Lux 环境亮度在 200~500LUX
2	Inspection Distance 检验距离	30-40cm form the test sample, within normal viewing angle 眼睛距显示器表面 30~40cm
3	Temperature 环境温度	Room Temperature (25 °C), no condensation 室温 (25 度±5%), 无凝水
4	Viewing Angle 视角	U/D: 15°/15°, L/R: 45°/45° 前后 15 度角范围内, 左右 45 度角范围内
5	Inspection Time 检验时间	15 seconds 15 秒内
6	Defect Allowance 缺陷总数	6 max 允许 6 个

### 12.2 Display Pattern 显示缺陷

No.	Items /Contents 检查项目	Type 类别		Standard 标准	Judgment 判定
		MA	MI		
1	No Display 无显示	√		--	Not Allowed 不允许
2	Line defect 缺少行或列	√		--	Not Allowed 不允许
3	Display abnormally 错误的显示	√		--	Not Allowed 不允许
4	Function Defective 缺少功能	√		--	Not Allowed 不允许
5	Glass Crack 玻璃破碎	√		--	Not Allowed 不允许
6	Spot Defect Including: Black spot, White spot Foreign particle, Polarizer dirt, Cell particle 黑点/白点		√	(a+b)/2 ≤ 0.3	Allowed 允许
				0.3 < (a+b)/2 ≤ 0.5	4 max. 允许 4 个
				(a+b)/2 > 0.5	Not Allowed 不允许
7	Line Defect Including: Black line, White line, Scratch 线		√	a ≤ 0.07	Allowed 允许
				0.07 < a ≤ 0.1 and b ≤ 5.0	4max. 允许 4 个
				a > 0.1 or b > 5.0	Not Allowed 不允许
8	Polarizer Dent/Bubble 偏光片气泡		√	(a+b)/2 ≤ 0.3	Allowed 允许
				0.3 < (a+b)/2 ≤ 0.5	4 max. 允许 4 个
				(a+b)/2 ≥ 0.5	Not Allowed 不允许



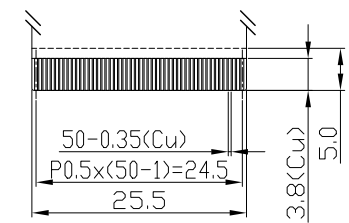
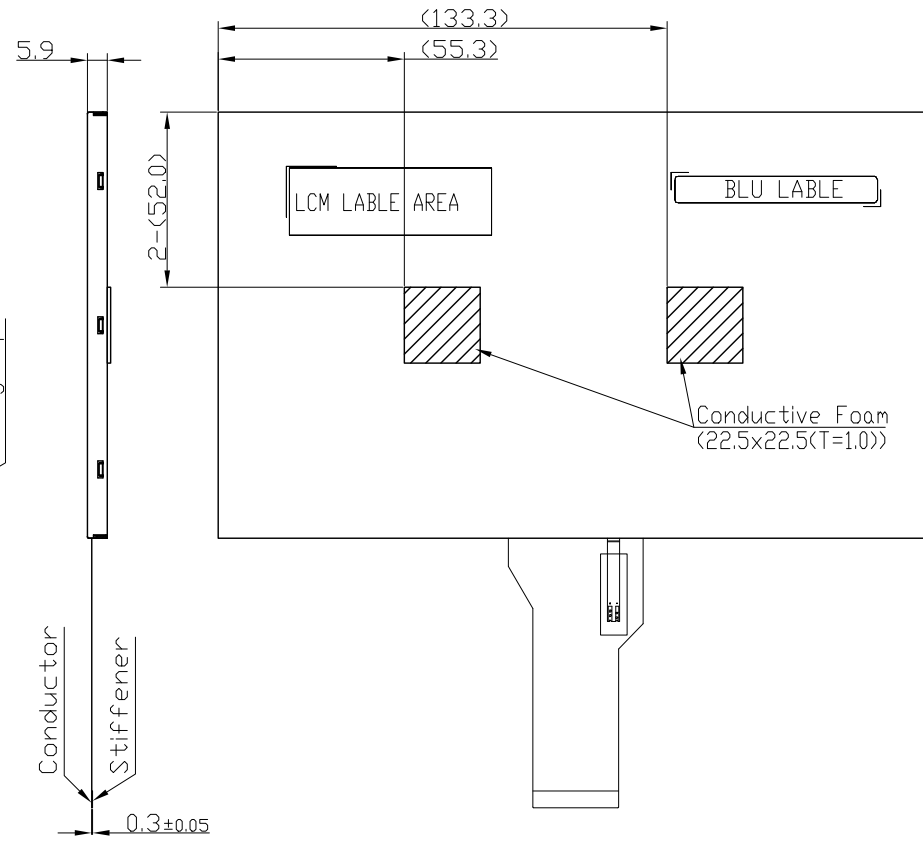
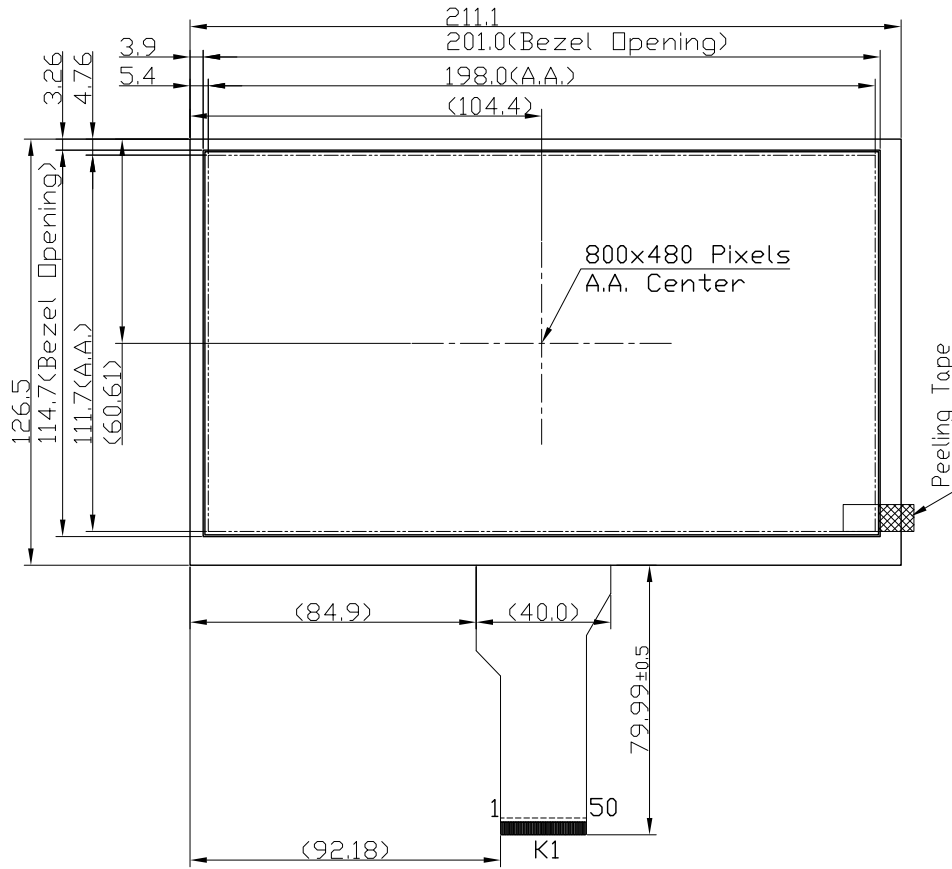
9	Bright dot defect 亮点 (在全黑屏下多像素点)			√	Random	3 max. 允许 3 个
					3 consecutive dots 3 个或以上连续的点	Not Allowed 不允许
10	Dark dot defect 暗点 (在全红或全绿或全蓝屏下缺像素点)			√	Random	4 max. 允许 4 个
					3 consecutive dots 3 个或以上连续的点	Not Allowed 不允许
11	Bright dot defect + Dark dot defect 亮点 + 暗点			√	--	6 max. 允许 6 个
12	FPC or FFC broken FPC/FFC 损坏		√		--	Not Allowed 不允许
13	PCBA defect PCBA 缺陷		--	--	Refer to IPC-A-610 按照 IPC-A-610	--

### 12.3 Quality Level and Sampling 抽样方法

Items 项目	Standard 标准
Sampling Standard 引用标准	MIL-STD-105E
Sampling Level 抽样等级	II
AQL level 合格判定水平	MA: AQL=0.65 MI: AQL=1.0

### 12.4 Handling Precaution 使用注意事项

- Never attempt to disassemble or rework LCD module  
禁止拆卸或改造显示模块
- Never let LCD module contact with liquids  
禁止液体接触
- LCD module can be easily damaged by electrostatic charge.  
Please maintain an optimum anti-static working environment.  
请在静电防护环境下打开包装使用
- LCD panel is made with glass.  
Any mechanical shock (eg. Vibration, distortion, extrusion, impact, drop) will damage the LCD module.  
振动、扭曲、挤压、碰撞、跌落等会造成损失或破裂
- Avoid showing a display pattern on screen for a long time (continuous ON segment)  
长时间画面停留会造成影像残留
- The color and evenness of the display may slightly vary with the temperature  
显示颜色和显示均匀度会因外界温度而有所变化
- Signal and Power supply excess the operation range may damage the LCD module  
错误的输入电压（电流）或电信号会造成电路或元器件烧坏
- Avoid touching the LCD surface to prevent any scratch on its surface  
避免手指和其他物品接触液晶屏表面



FPC Details  
Scale=3/2

K1 Terminal	
No	Pin Name
1	VLED+
2	VLED+
3	VLED-
4	VLED-
5	GND
6	VCOM
7	DVDD
8	MODE
9	DE
10	VS
11	HS
12	B7
:	:
19	B0
20	G7
:	:
27	G0
28	R7
:	:
35	R0
36	GND
37	DCLK
38	GND
39	L/R
40	U/D
41	VGH
42	VGL
43	AVDD
44	RESET
45	NC
46	VCOM
47	DITHB
48	BIST
49	NC
50	NC

- Note:
- \*1. LCD Display Type: TFT, Transmissive
  - \*2. Pixel Arrangement: RGB-STRIPE
  - \*3. Color Depth : 16.7M Colors
  - \*4. Operating Voltage : 3.3V
  - \*5. Backlight: White LED
  - \*6. Backlight Supply: 220mA( 9.3V TYP.)
  - \*7. Interface: RGB\_24bit

- \*8. Recommended Connector:  
K1 : FH12A-50S-0.5H or Equivalent
- \*9. Operating Temperature : -20°C~70°C
- \*10. Storage Temperature : -30°C~80°C
- \*11. Unmarked Tolerance : ≤150,±0.3; >150,±0.5

C		
B		
A		
Rev/Note		Date
Dwg Title	LMT090DICFWD-2 Outline Dwg	
Dwg No.	MK-008228-1-1	Date 2023-11-08
Scale 1/1	Tol.	Unit mm
Approved	Checked	Paper Size A3
		Drawn Luo Lin

