

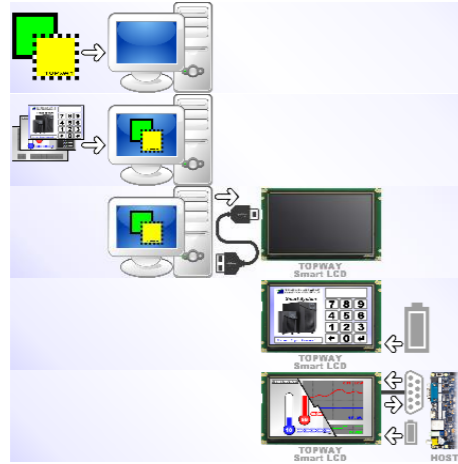
TOPWAY Smart LCD

TOPWAY Smart LCD embed a display engine to show pre-loaded user-interface (UI) and display real time data provided by host via serial interface (RS-232C / RS-485 / UART). They reduce the host system's workload and provide a much faster interaction with the users.

TOPWAY SGTools can dramatically simplify and speed-up the UI design process and realize it in minutes.

Development flow

1. Install SGTools
2. Design UI
3. Download to Smart LCD
4. Power on & display
5. Show data form host



Note: selected models support U-drive update, please contact us for details

Support

SGTools support email

support@topwaydisplay.com

Smart LCD inquiry email

sales@topwaydisplay.com

We are truly welcome your email at any time

Tutorial Projects

1. Text, icon & background
2. Number with touch_key operation
3. Number update via RS-232C
4. Number input by PIP no. KB
5. Number formatting
6. Animated icon & text
7. QR code generated form an input string
8. Progress_bar in 3 modes
9. Bit_icon with touch_key XOR operation
10. Indexed_icon controlled by a number
11. UI with PAGE jump
12. Decimal_icon controlled by a number
13. Show Graphs update via RS-232C

youtu.be/xvA3wnRM43M (2:41)

youtu.be/MJ-OI6AOVPE (1:57)

youtu.be/XQp6tghR68U (2:03)

youtu.be/UyDzy1lmat0 (2:56)

youtu.be/dd0dZdlbfo8 (3:15)

youtu.be/GqI0GiIDK80 (1:54)

youtu.be/G185QtZbWjg (2:37)

youtu.be/7579Wtf-4s (2:58)

youtu.be/3uzFYajW5Qo (3:01)

youtu.be/ucul6ZoqAl8 (3:05)

youtu.be/lXkcBMslidl (2:35)

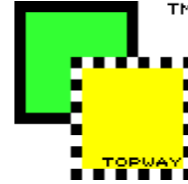
youtu.be/QCQCHSdFNrA (2:52)

youtu.be/_lIA38DPYk (2:48)

What is needed

Software

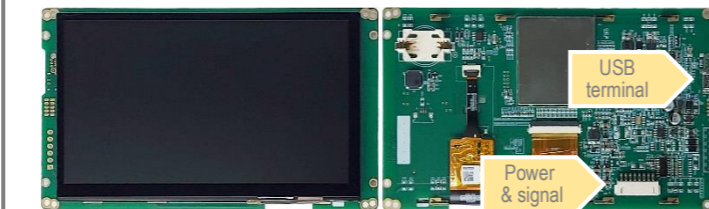
TOPWAY SGTools for Smart LCD
(Download from topwaydisplay.com)



Note: SGTools is an update form previous RGTools

Hardware

TOPWAY Smart LCD (HMT070MEE-D as example)



Connection cable
(for Power and signal)



USB-C cable
(for project download)



DC Power supply (12V 1A)



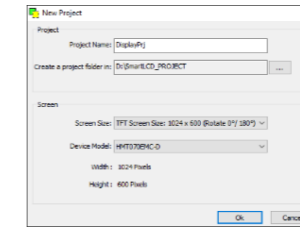
Note:

- *1. Power, Signal & USB terminals based on HMT070MEE-D as example.
- *2. Smart LCD with UART should NOT direct interface with RS-232C host!
- *3. Please refer to Smart LCD user manual for details

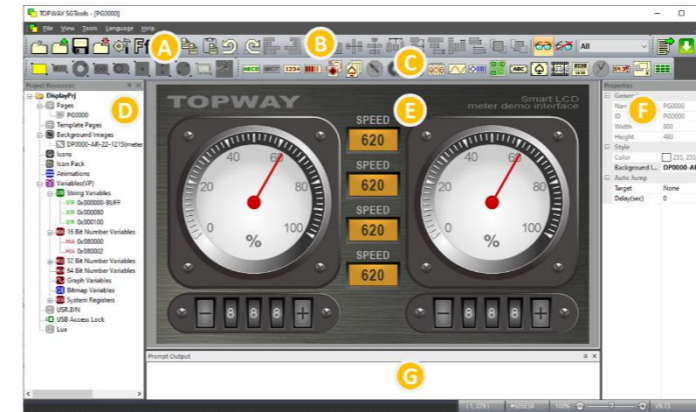
TOPWAY SGTools

Create a project

- Install SGTools in a Windows PC
- Run SGTools Create New Project
- Select resolution
- Select model



Development environment



- A. menu and config
- B. alignment tools
- C. elements for UI resource (VP, icons, etc)
- E. UI editing area
- F. Elements or page properties
- G. prompt output area

Build UI with elements

Smart LCD UI based on **PAGES**. They link with background image to show on screen. **PAGE** contains display elements and/or action elements. **VP Values** are RAM data for display and/or data exchange with host. **Touch elements** (eg. TPK) can interact with the screen touching actions in run time. **Display elements** can show linked image images, text, numbers.

Display Elements relationship

